

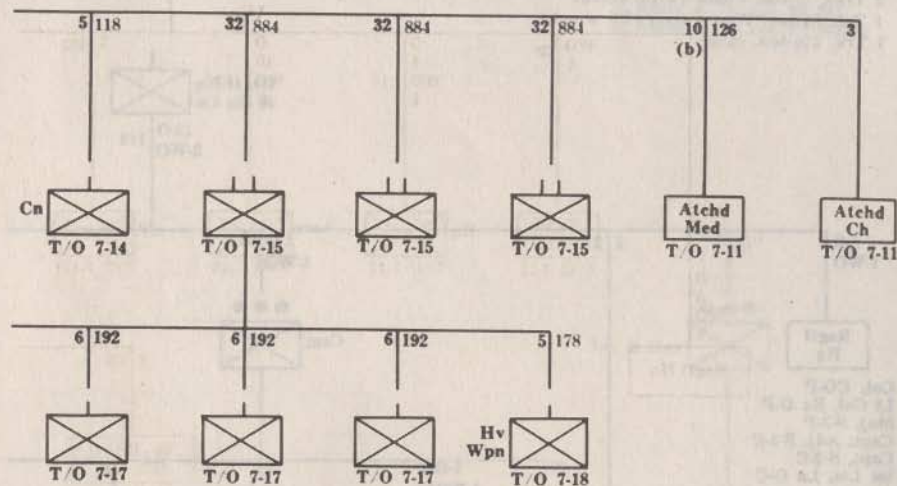
## WEAPONS

Carbine, U. S., cal .30, M1	1128
Gun, antitank, 37-mm	24
Gun, machine, cal .50, HB, M2, Flexible for truck mount, M32	10(d)
Gun, machine, Browning, cal .30, M1917	24
Gun, machine, light, cal .30, M1919A4	18
Howitzer, 75-mm, self-propelled	6
Howitzer, 105-mm, self-propelled	2
Mortar, 81-mm	18
Mortar, 60-mm	27
Pistol, automatic, cal .45	213 (c)
Rifle, automatic, Browning, cal .30, M1918A2	189
Rifle, U. S., cal .30, M1	1600
Rifle, U. S., cal .30, M1903	203

Notes: The following abbreviations, not authorized by FM 21-30, are used in these tables:

Cn—Cannon  
C—Carbine  
P—Pistol

The abbreviation R as used in these tables applies to the U. S. Rifle, cal .30, M1, only. The U. S. Rifle, cal .30, M1903 is indicated by R, M1903.



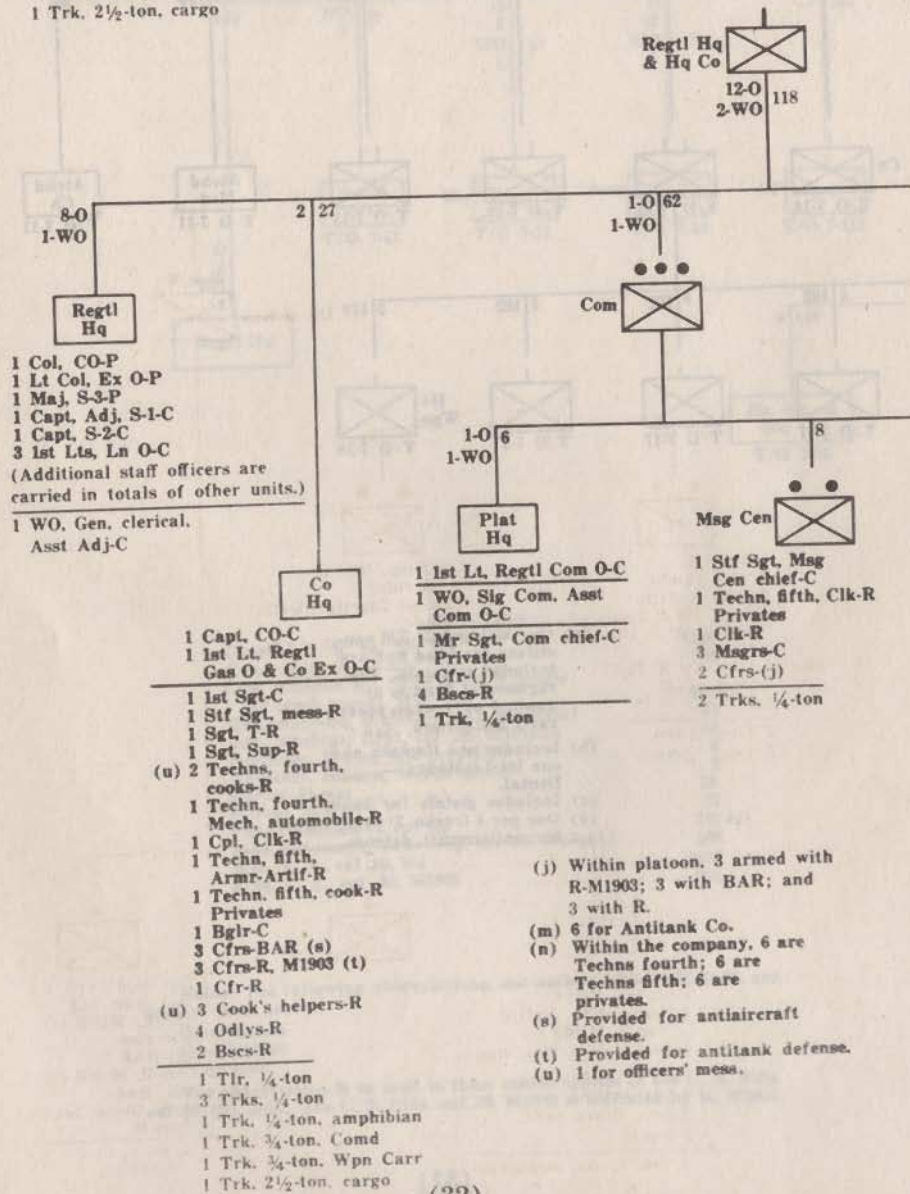
- (a) One WO and 28 EM constitute the band and are included in totals. The regimental band is organized only when specifically authorized.
- (b) Includes one Captain and one 1st Lieutenant—Dental.
- (c) Includes pistols for band.
- (d) One per 4 trucks, 2½-ton, cargo, for antiaircraft defense.

HEADQUARTERS AND  
HEADQUARTERS COMPANY  
INFANTRY REGIMENT

T/O 7-12

TRANSPORTATION

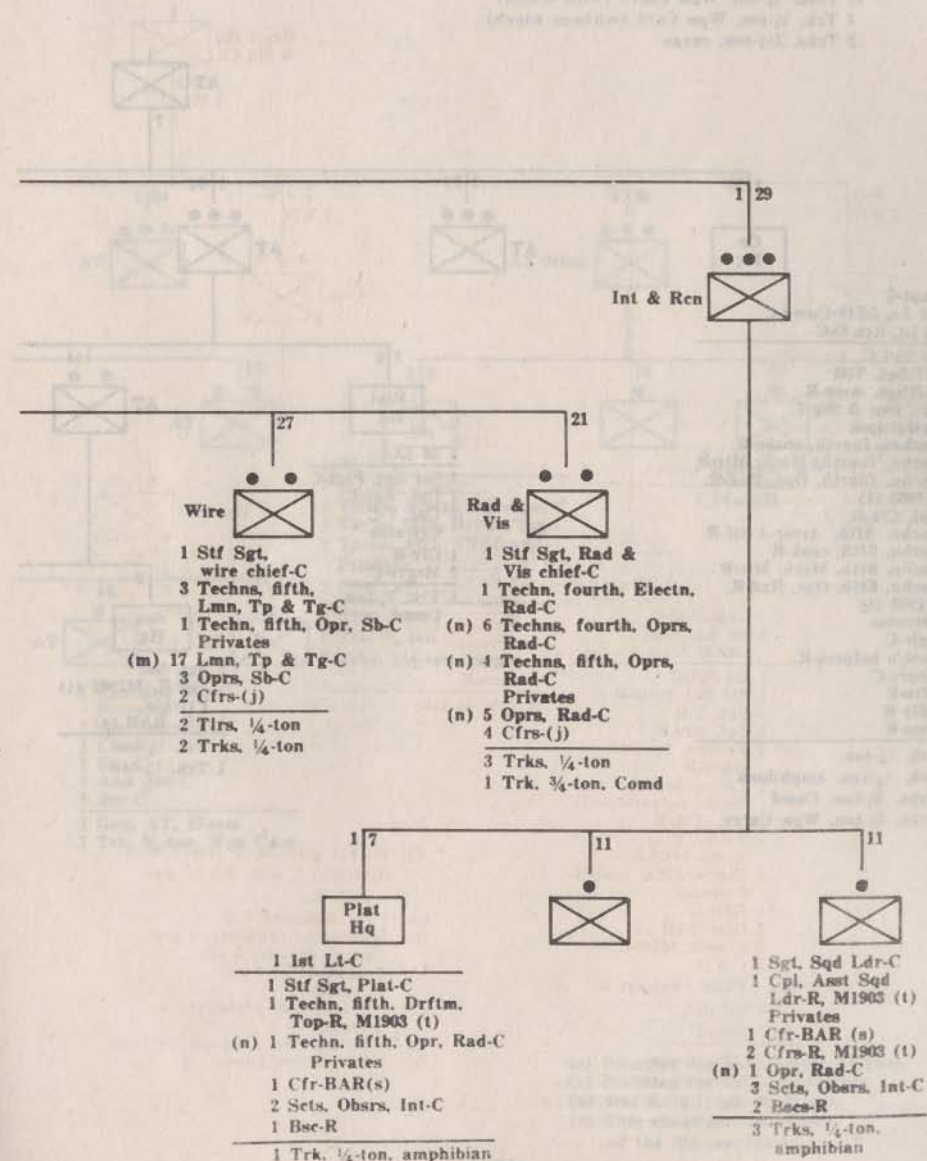
- 3 Trks, ¼-ton
- 11 Trks, ½-ton
- 8 Trks, ½-ton, amphibian
- 2 Trks, ¾-ton, Comd (with winch)
- 1 Trk, ¾-ton, Wpn Carr (with winch)
- 1 Trk, 2½-ton, cargo



(32)

ARMAMENT

- 74 Carbines, U. S., cal .30, M1
- 3 Pistols, automatic, cal .45
- 9 Rifles, automatic, Browning, cal .30, M1918A2
- 33 Rifles, U. S., cal .30, M1
- 13 Rifles, U. S., cal .30, M1903

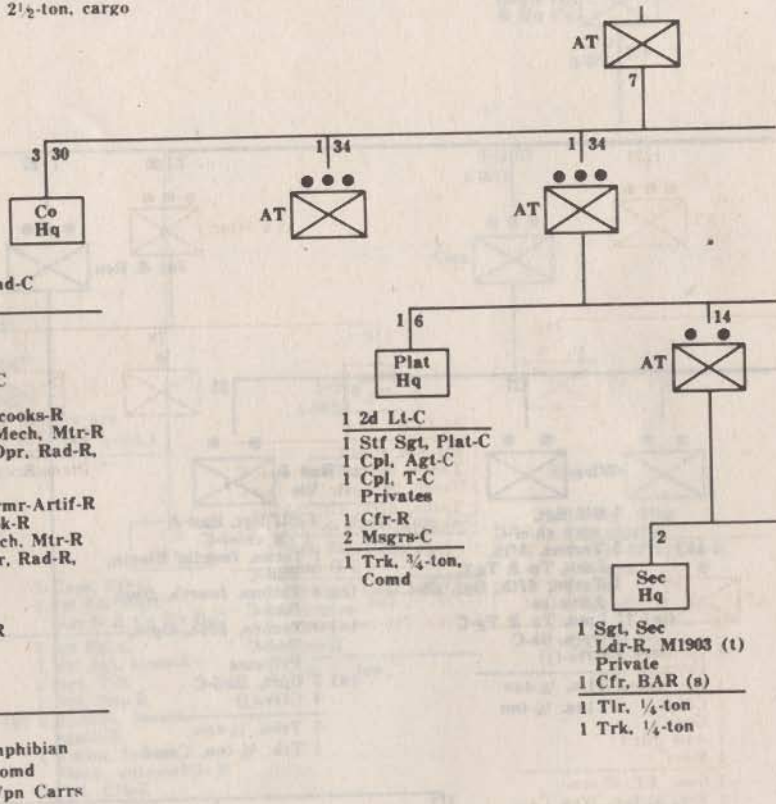


(33)

## INFANTRY ANTITANK COMPANY

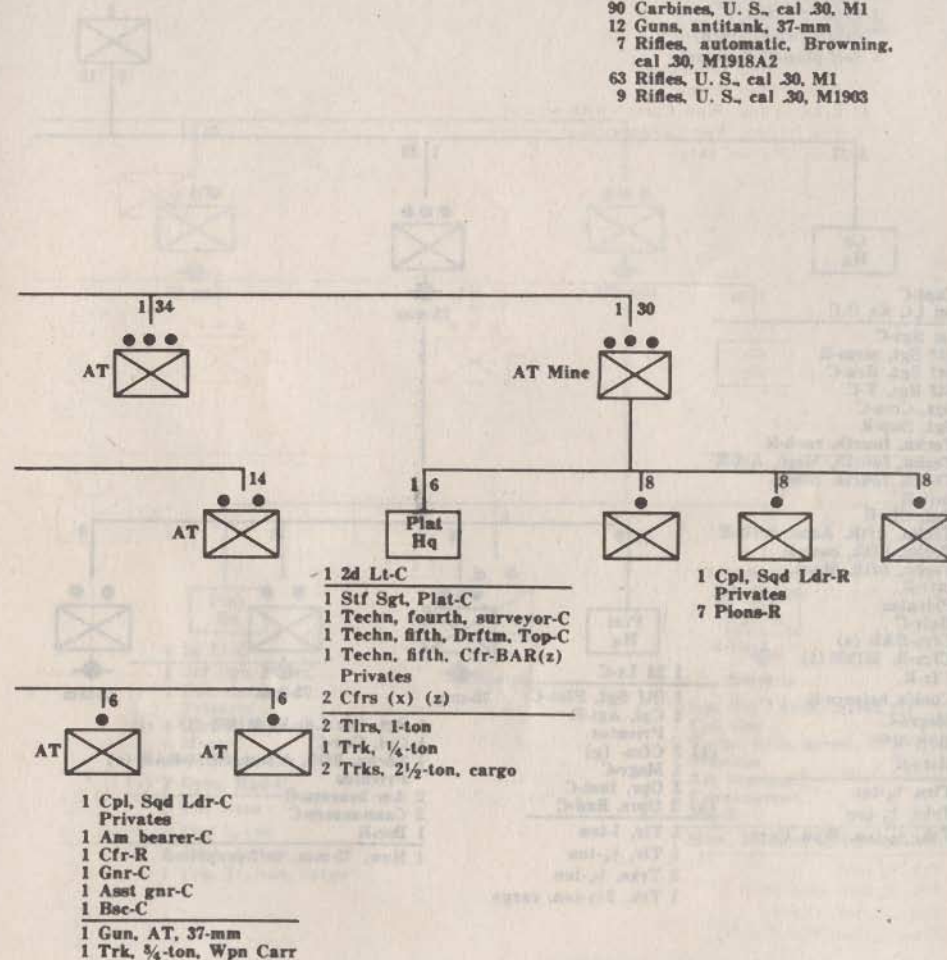
## TRANSPORTATION

- 2 Tlrs, 1-ton
- 6 Tlrs, 1/4-ton
- 8 Trks, 1/4-ton
- 1 Trk, 1/4-ton, amphibian
- 5 Trks, 3/4-ton, Comd
- 13 Trks, 3/4-ton, Wpn Carrs (with winch)
- 1 Trk, 3/4-ton, Wpn Carr (without winch)
- 2 Trks, 2 1/2-ton, cargo



## ARMAMENT

- 90 Carbines, U. S., cal .30, M1
- 12 Guns, antitank, 37-mm
- 7 Rifles, automatic, Browning, cal .30, M1918A2
- 63 Rifles, U. S., cal .30, M1
- 9 Rifles, U. S., cal .30, M1903

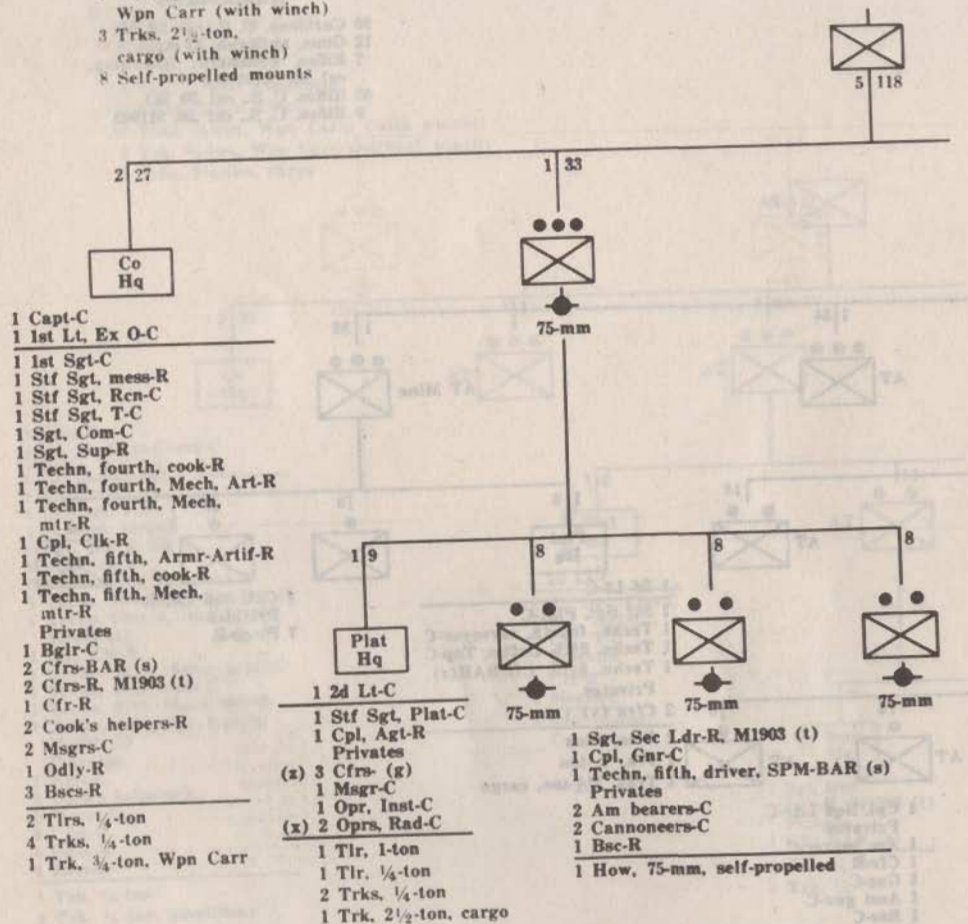


- (s) Provided for antiaircraft defense.
- (1) Provided for antitank defense.
- (x) One R, M-1; one R, M1903.
- (z) This chauffeur drives one of the 2 1/2-ton trucks.

## TRANSPORTATION

- 3 Tlrs, 1-ton
- 5 Tlrs, 1/4-ton
- 10 Trks, 1/4-ton
- 1 Trk, 3/4-ton
- Wpn Carr (with winch)
- 3 Trks, 2 1/2-ton, cargo (with winch)
- 8 Self-propelled mounts

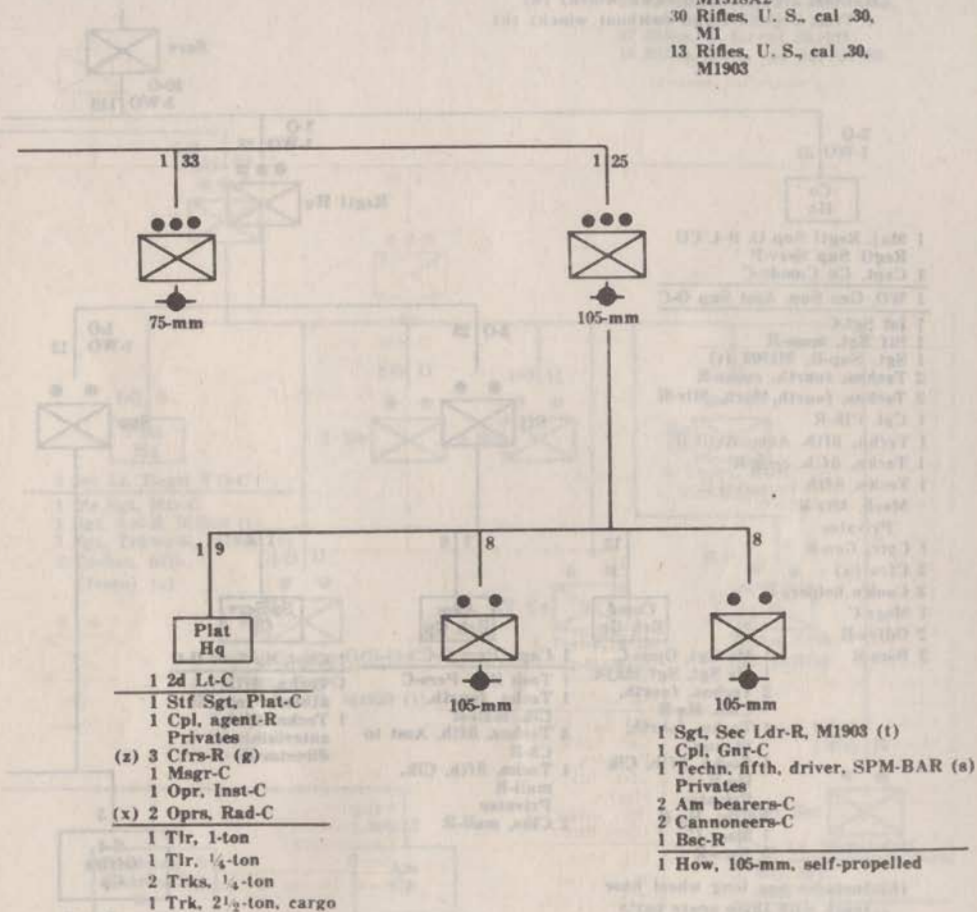
## INFANTRY CANNON COMPANY



- (g) One BAR; one R, M1903; one R.
- (s) Provided for antiaircraft defense.
- (t) Provided for antitank defense.
- (x) Also operate telephones. Within company, two are technicians fourth grade, two are technicians fifth grade, and two are privates.
- (a) The chauffeur of one 2 1/2-ton truck is a technician fifth grade.

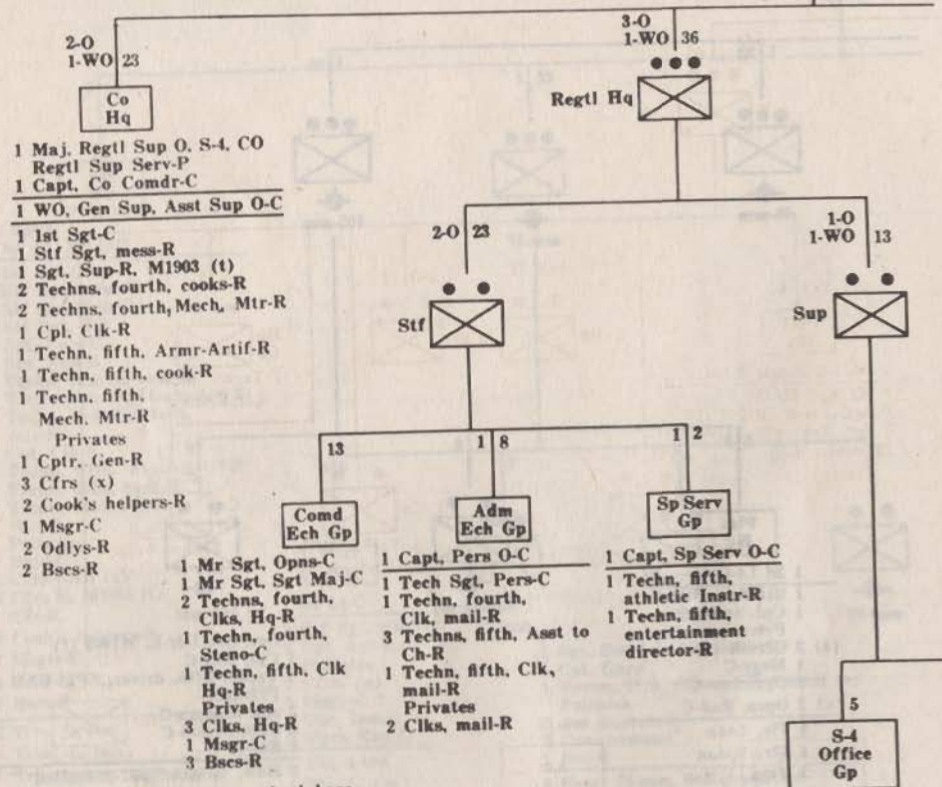
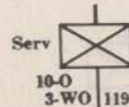
## ARMAMENT

- 67 Carbines, U. S., cal .30, M1
- 6 Howitzers, 75-mm, self-propelled
- 2 Howitzers, 105-mm, self-propelled
- 13 Rifles, automatic, Browning, cal .30, M1918A2
- 30 Rifles, U. S., cal .30, M1
- 13 Rifles, U. S., cal .30, M1903



## TRANSPORTATION

- 19 Tlrs, 1-ton  
6 Trks, 1/4-ton  
2 Trks, 3/4-ton, Wpn Carrs (with winch)  
21 Trks, 2 1/2-ton cargo (with winch) (h)  
9 Trks, 2 1/2-ton cargo (without winch) (h)



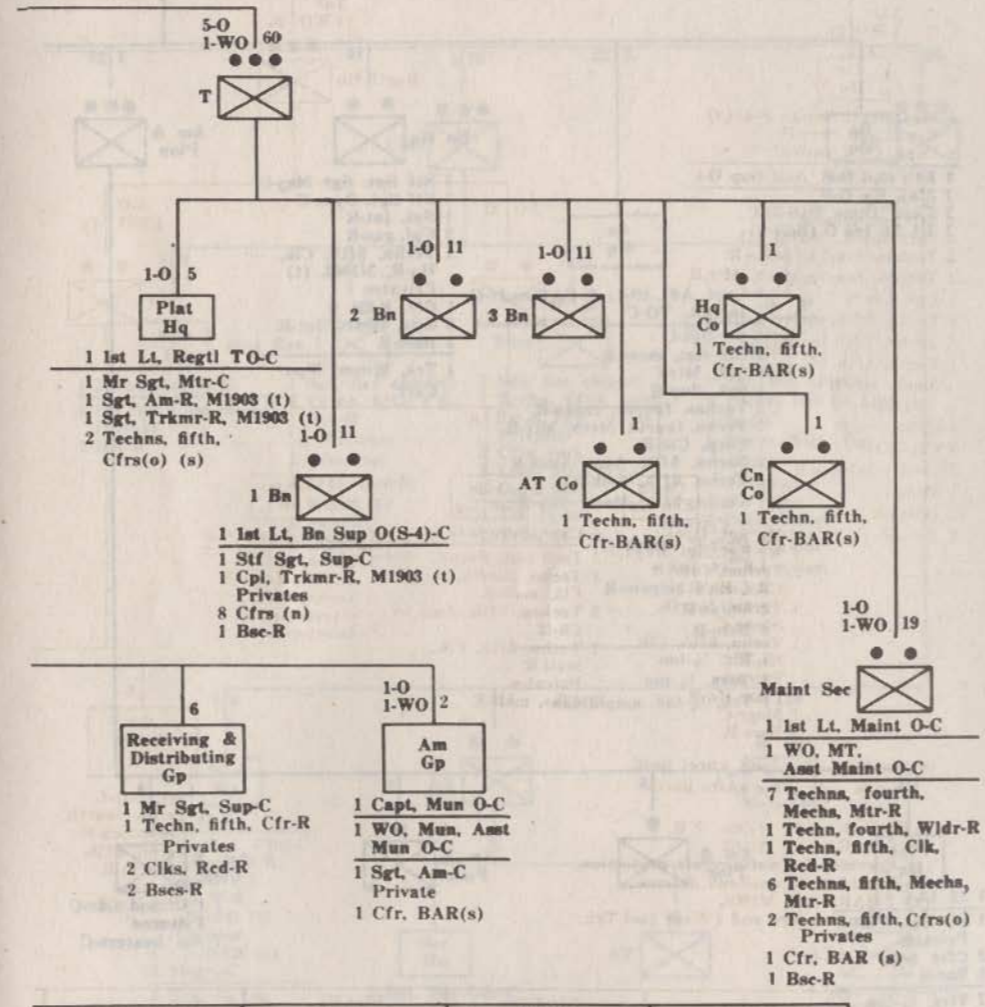
- (h) Includes one long wheel base truck with three spare parts bins.  
(n) 3 BAR; 3 R, M1903; 2 R.  
(o) 1 BAR; 1 R, M1903.  
(s) Provided for antiaircraft protection.  
(t) Provided for antitank defense.  
(x) 2 BAR; 2 R, M1903.  
(y) 1 Gen Sup Trk and 1 Engr tool Trk.

Co Hq	Sup Sec Regtl Hq Plat	Plat Hq T Plat	3 Bn Secs (each)
1 Tlr, 1-ton 2 Trks, 1/4-ton 1 Trk, 3/4-ton, Wpn Carr 1 Trk, 2 1/2-ton, cargo, Ki & Bag	1 Trk, 3/4-ton Wpn Carr 1 Trk, 2 1/2-ton, cargo	(y) 2 Trks, 2 1/2-ton, cargo	5 Tlrs, 1-ton 1 Trk, 1/4-ton 2 Trks, 2 1/2-ton, cargo Am 5 Trks, 2 1/2-ton, cargo, Ki & Bag

(38)

## ARMAMENT

- 27 Carbines, U. S., cal .30, M1  
1 Pistol, automatic, cal .45  
19 Rifles, automatic, Browning,  
cal .30, M1918A2  
67 Rifles, U. S., cal .30, M1  
18 Rifles, U. S., cal .30, M1903



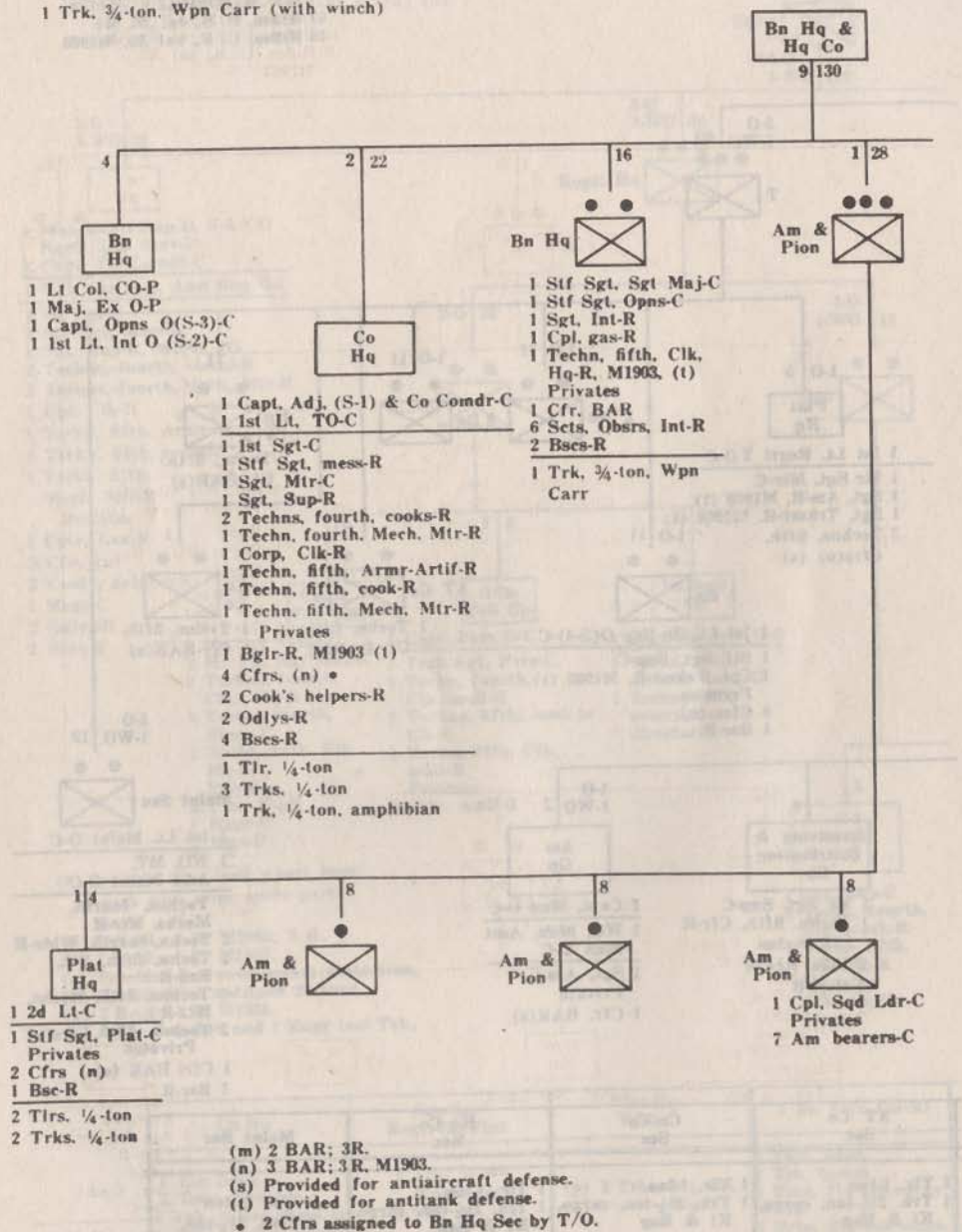
AT Co Sec	Cn Co Sec	Hq Co Sec	Maint Sec
1 Tlr, 1-ton 1 Trk, 2 1/2-ton, cargo, Ki & Bag	1 Tlr, 1-ton 1 Trk, 2 1/2-ton, cargo, Ki & Bag	1 Tlr, 1-ton 1 Trk, 2 1/2-ton, cargo, Ki & Bag	1 Trk, 1/4-ton 2 Trks, 2 1/2-ton, cargo

(39)

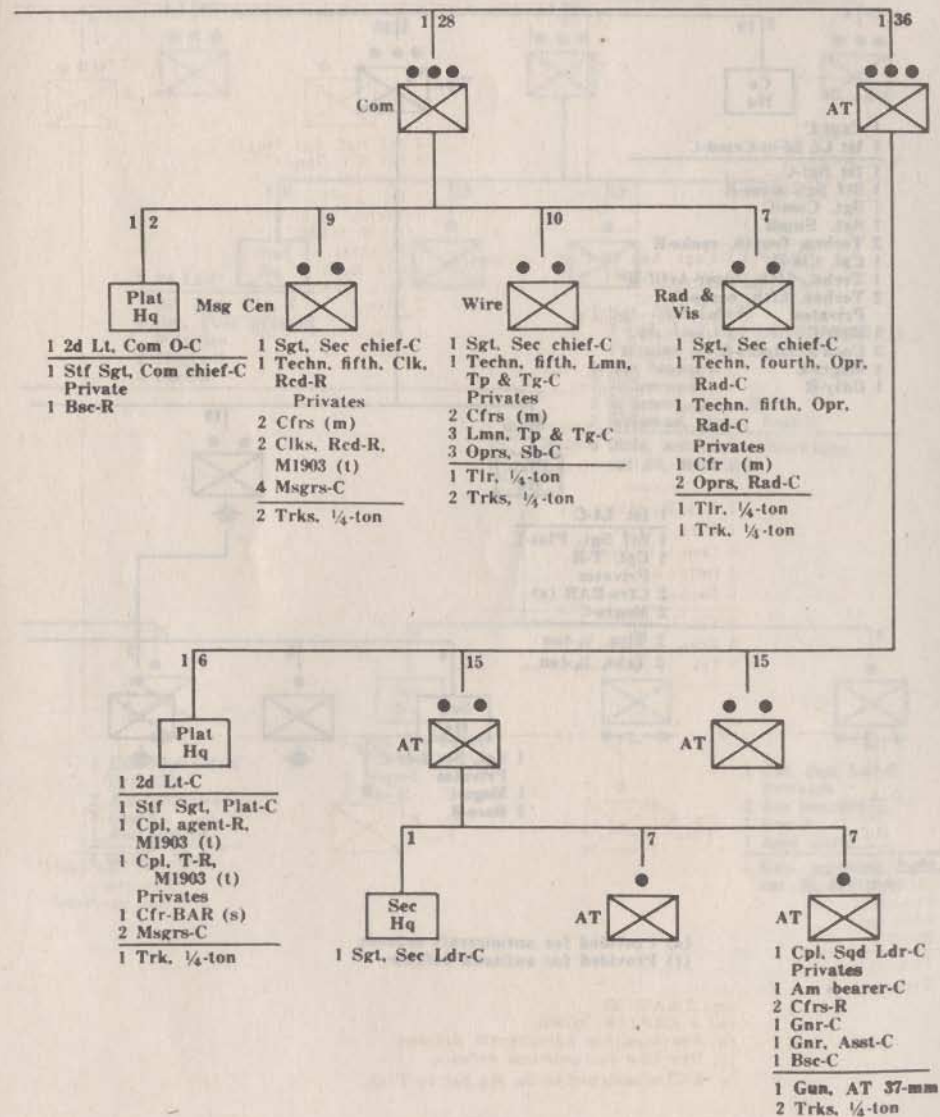
**HEADQUARTERS AND  
HEADQUARTERS COMPANY  
INFANTRY BATTALION**

**TRANSPORTATION**

- 5 Trks. 1/4-ton
- 19 Trks. 1/4-ton
- 1 Trk. 1/4-ton, amphibian
- 1 Trk. 3/4-ton, Wpn Carr (with winch)

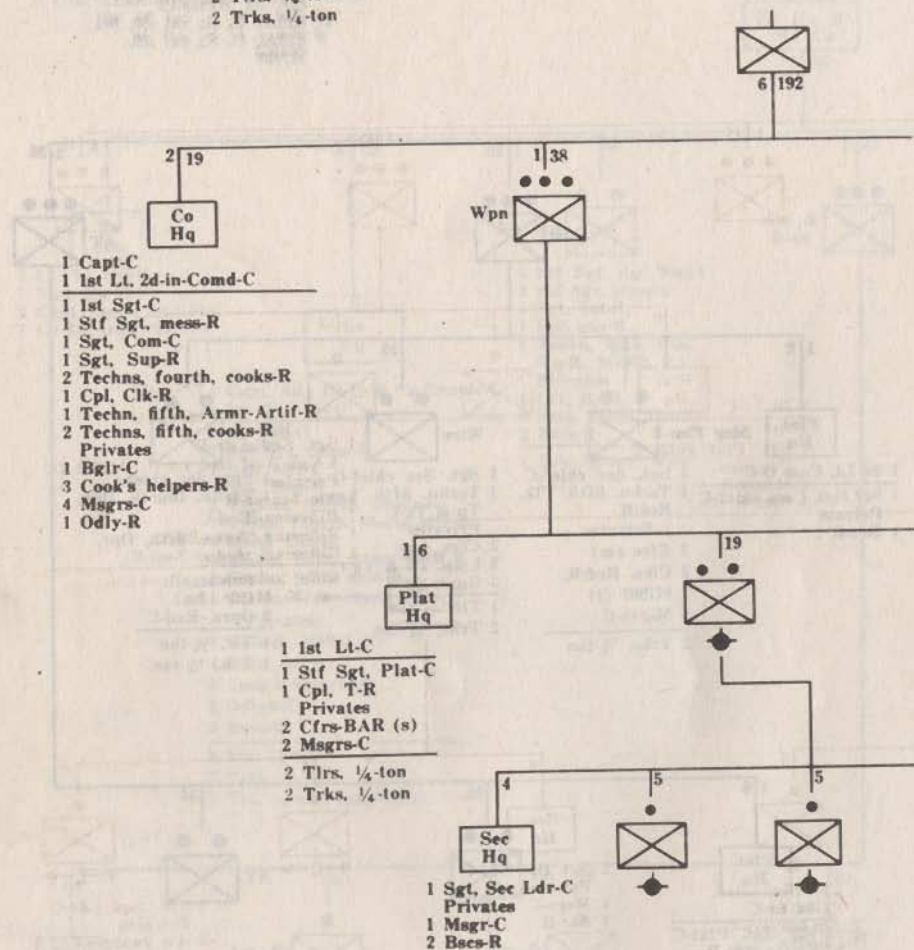
**ARMAMENT**

- 80 Carbines, U. S., cal .30, M1
- 4 Guns, 37-mm, antitank
- 2 Pistols, automatic, cal .45
- 7 Rifles, automatic, Browning, cal .30, M1918A2
- 41 Rifles, U. S., cal .30, M1
- 9 Rifles, U. S., cal .30, M1903



## TRANSPORTATION

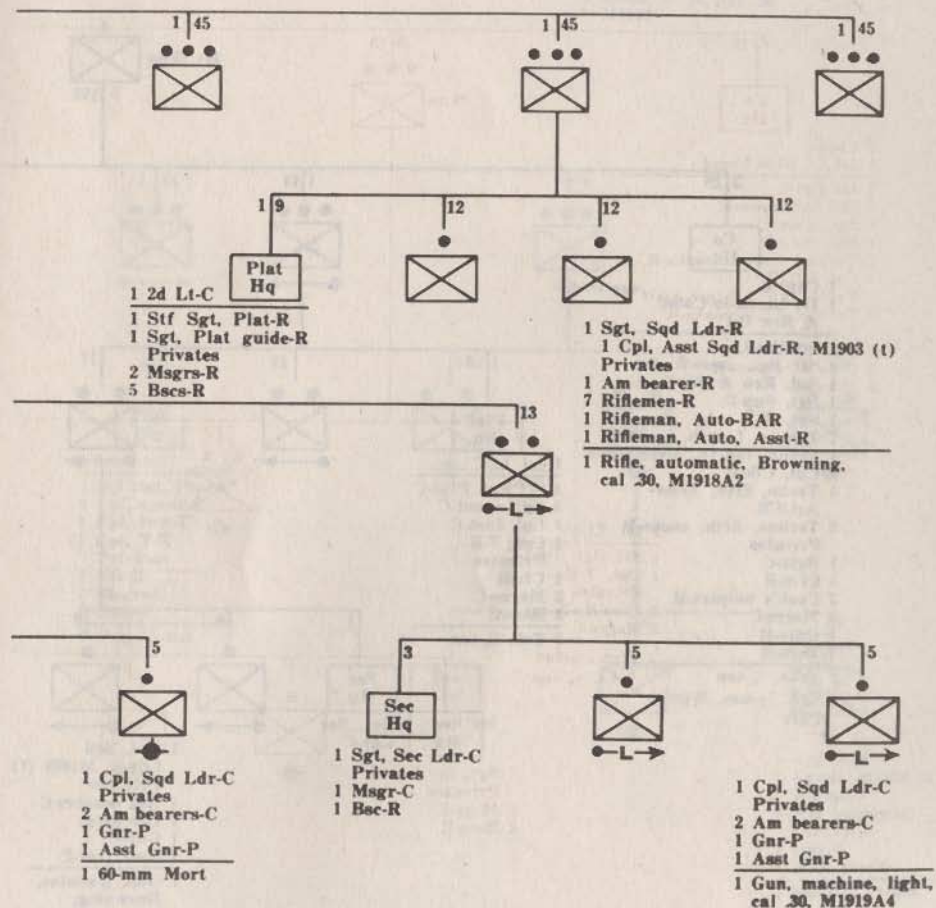
- 2 Trks. ¼-ton
- 2 Trks. ¼-ton



(s) Provided for antiaircraft defense.  
(t) Provided for antitank defense.

## ARMAMENT

- 35 Carbines, U. S., cal .30, M1
- 2 Guns, machine, light, cal .30, M1919A4
- 3 Mortars, 60-mm
- 10 Pistols, automatic, cal .45
- 11 Rifles, automatic, Browning, cal .30, M1918A2
- 133 Rifles, U. S., cal .30, M1
- 9 Rifles, U. S., cal .30, M1903



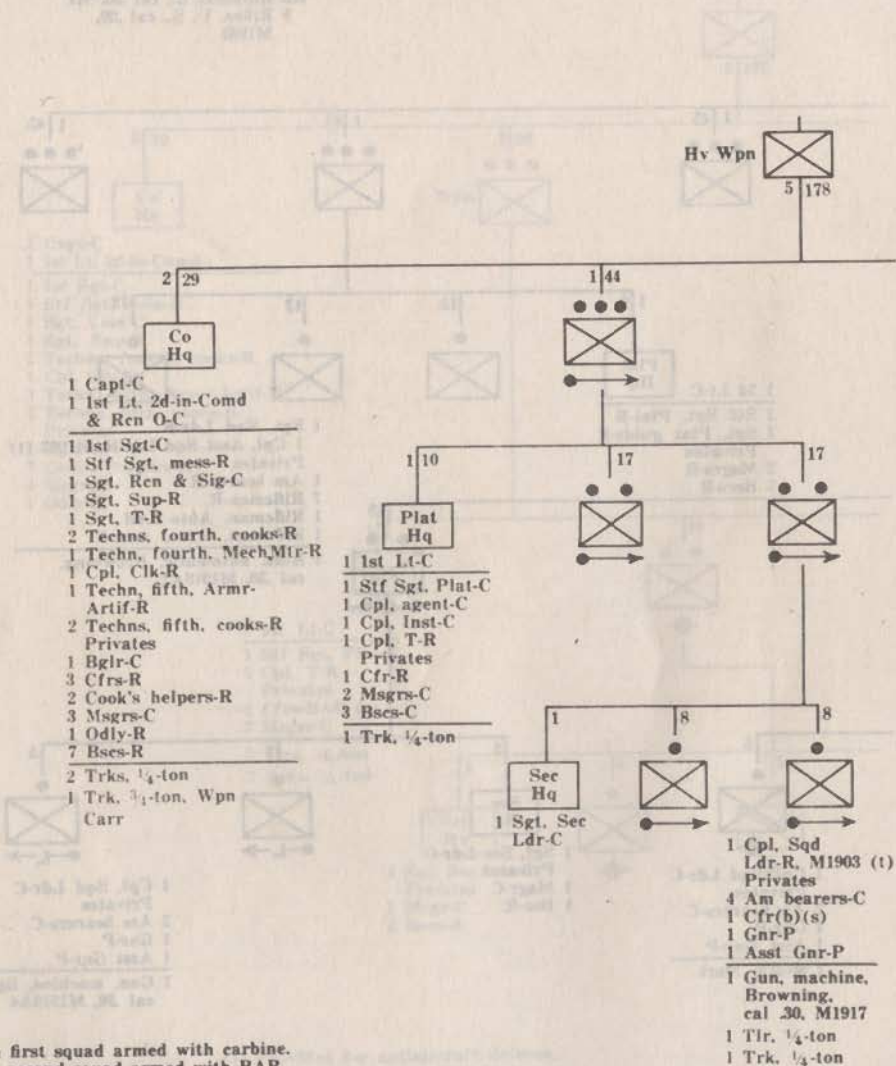
- 1 Cpl, Sqd Ldr-C
- Privates
- 2 Am bearers-C
- 1 Gnr-P
- 1 Asst Gnr-P
- 1 Gun, machine, light, cal .30, M1919A4

INFANTRY HEAVY WEAPONS COMPANY

T/O 7-18

TRANSPORTATION

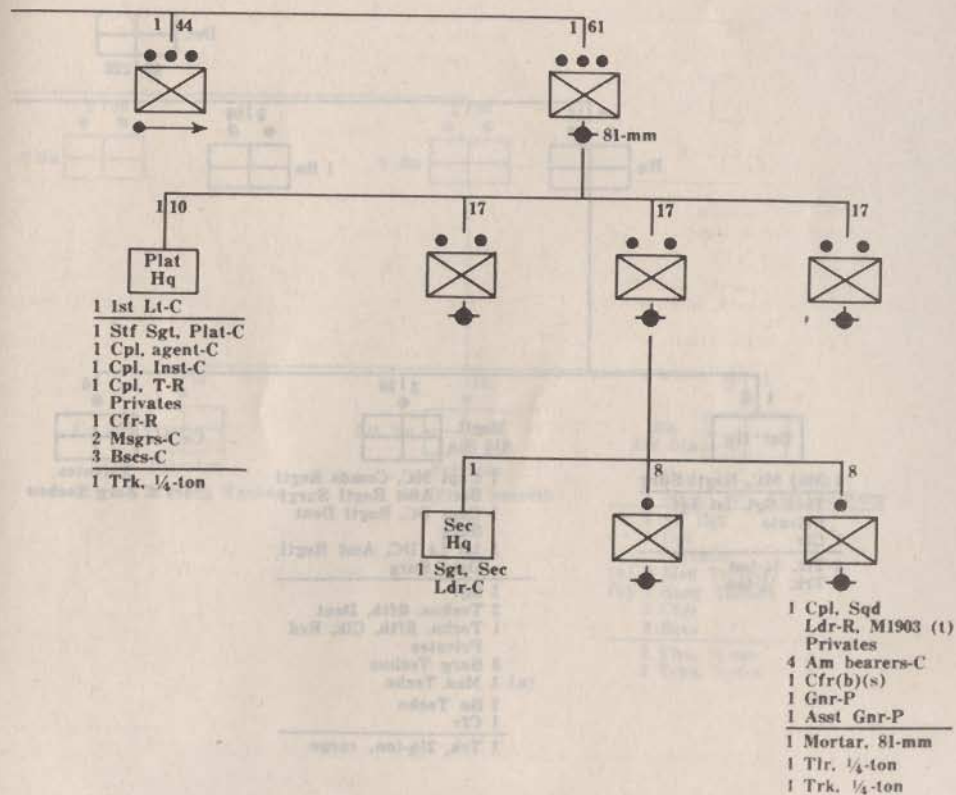
- 14 Trks. 1/4-ton
- 19 Trks. 1/2-ton
- 1 Trk. 3/4-ton, Wpn Carr (with winch)



- (b) In first squad armed with carbine. In second squad armed with BAR.
- (s) Provided for antiaircraft defense.
- (t) Provided for antitank defense.

ARMAMENT

- 8 Guns, machine, Browning, cal .30, M1917
- 6 Mortars, 81-mm
- 105 Carbines, U. S., cal .30, M1
- 28 Pistols, automatic, cal .45
- 7 Rifles, automatic, Browning, cal .30, M1918A2
- 29 Rifles, U. S., cal .30, M1
- 14 Rifles, U. S., cal .30, M1903



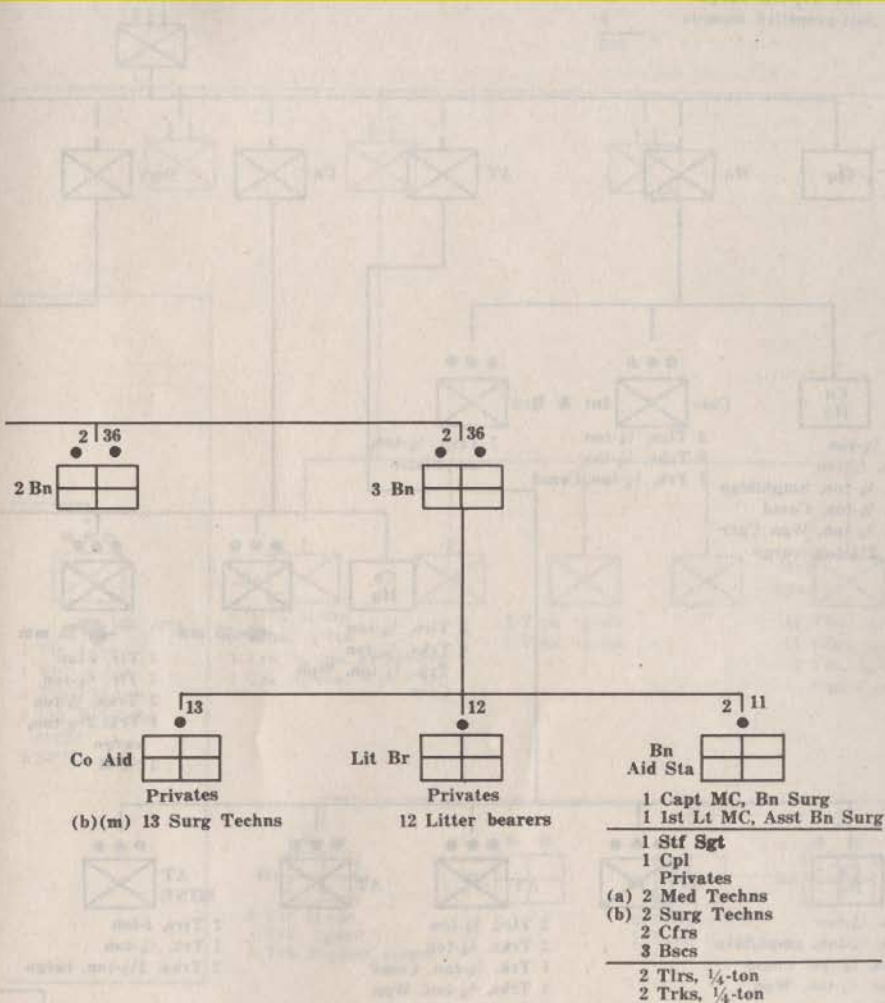
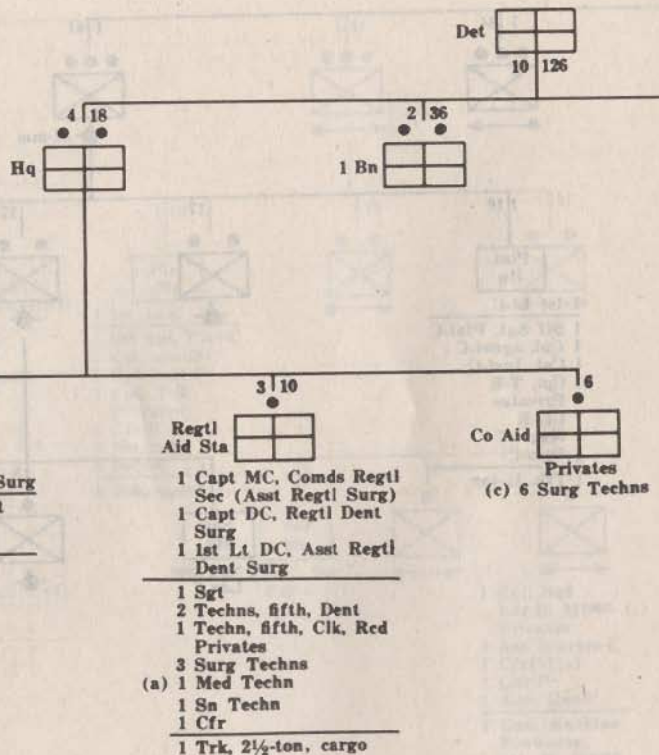


**MEDICAL DETACHMENT, INFANTRY REGIMENT.**

T/O 7-11

**TRANSPORTATION**

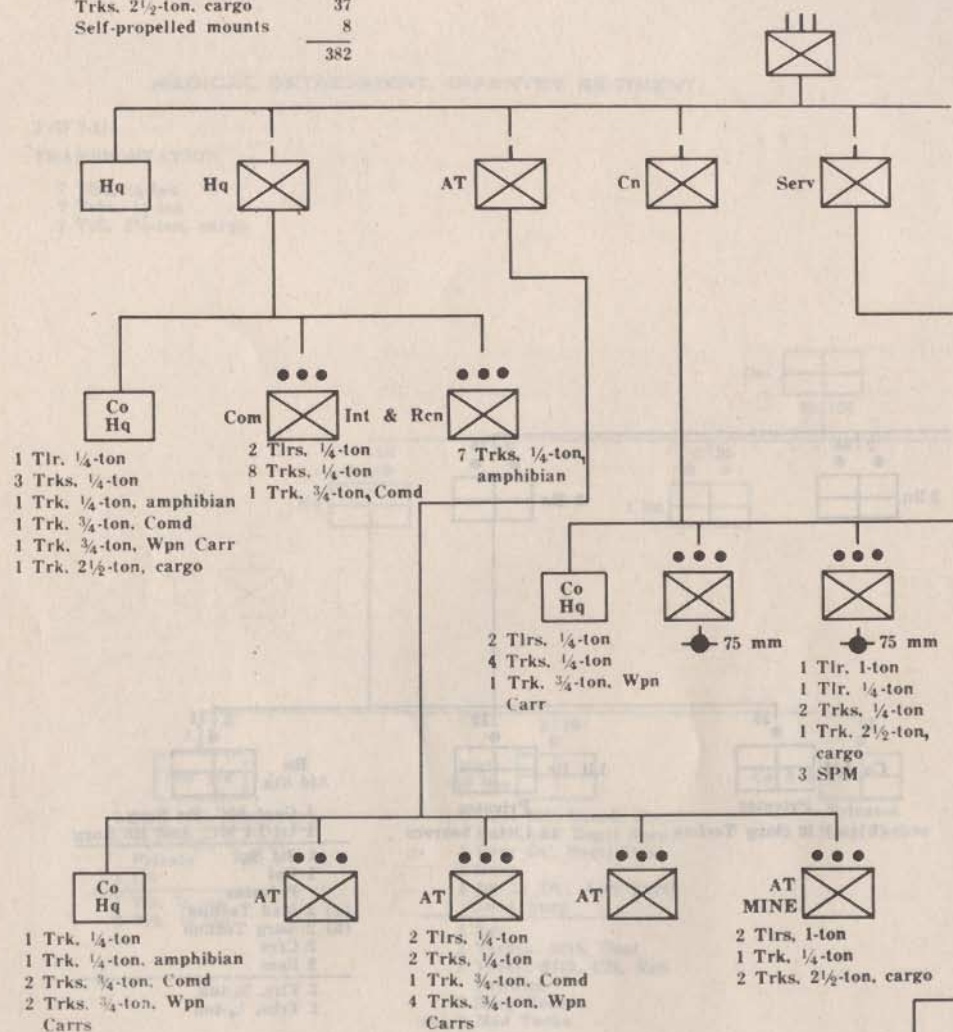
- 7 Tlrs, 1/4-ton
- 7 Trks, 1/4-ton
- 1 Trk, 2 1/2-ton, cargo



- (a) Within Det, 2 are Techns, fifth; 5 are Pvt.
- (b) Within Det, 9 are Techns, fourth; 14 are Techns, fifth; and 31 are Pvt.
- (c) Includes 3 Co aid men for AT Co. and 3 for Cn Co.
- (m) Co aid men, 1 per each Plat of R, Hv Wpn, and AT Cos.

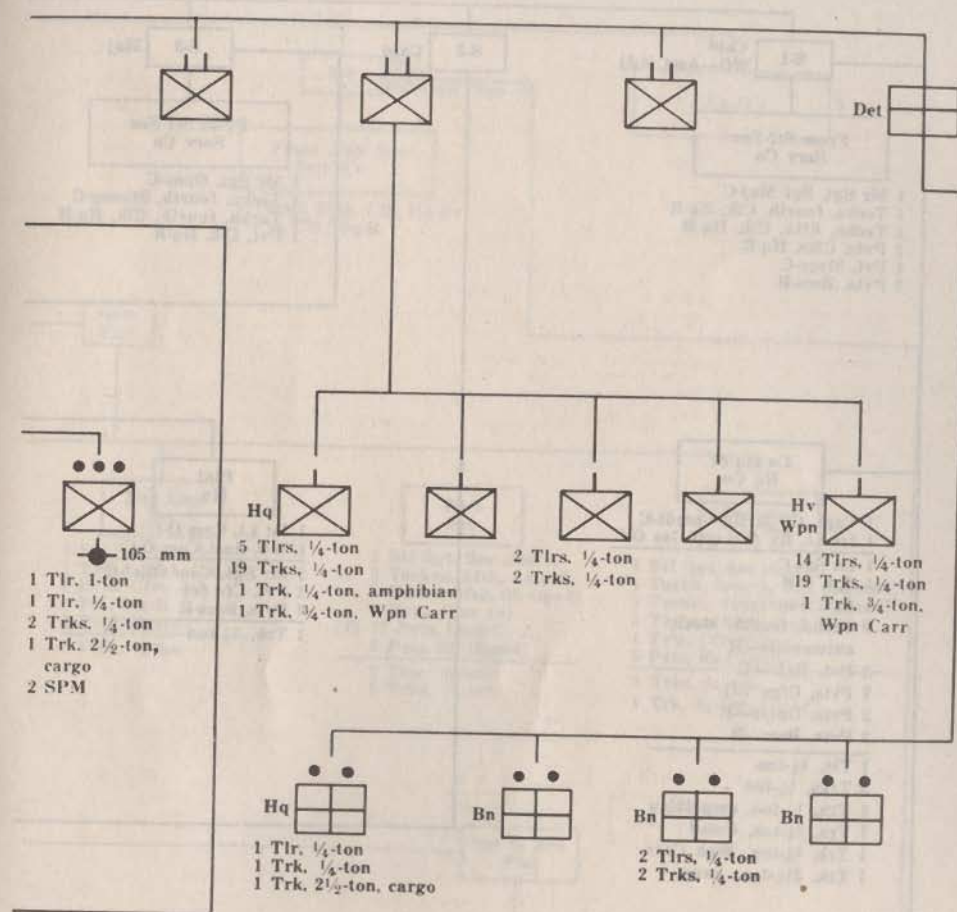
Tlrs. 1-ton	24
Tlrs. ½-ton	96
Trks. ½-ton	174
Trks. ½-ton, amphibian	12
Trks. ¾-ton, Comd	7
Trks. ¾-ton, Wpn Carr	24
Trks. 2½-ton, cargo	37
Self-propelled mounts	8
	<hr/> 382

### INFANTRY REGIMENT—TRANSPORTATION



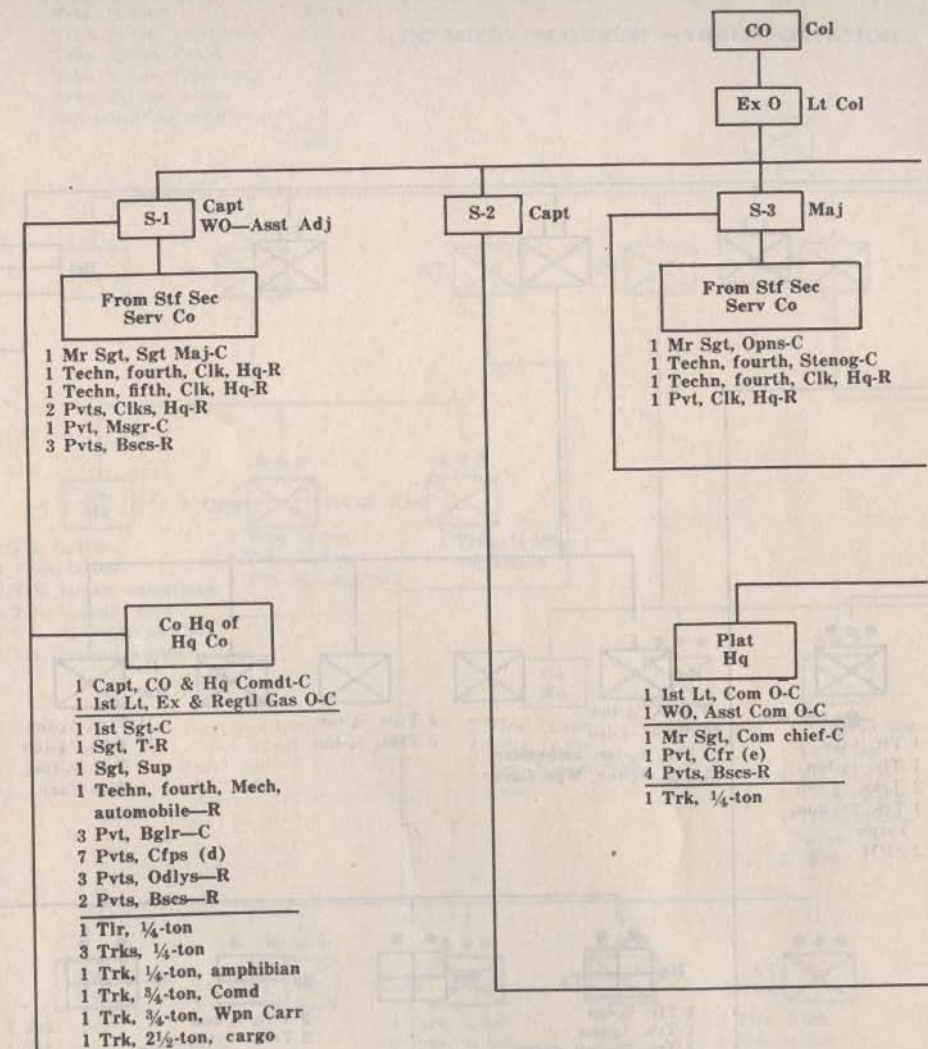
#### SERVICE

	Co Hq	Regtl Hq Plat	Plat Hq T Plat
Comd Vehicles	2 Trks. ¼-ton	1 Trk. ¾-ton, Wpn Carr	
Am Tn			
Ki & Bag Tn & Misc Tns	1 Tlr. 1-ton 1 Trk. 2½-ton (Ki & Bag) 1 Trk. ¾-ton, Wpn Carr	1 Trk. 2½-ton,	2 Trks. 2½-ton (1 Gen Sup) (1 Engr Equipment)

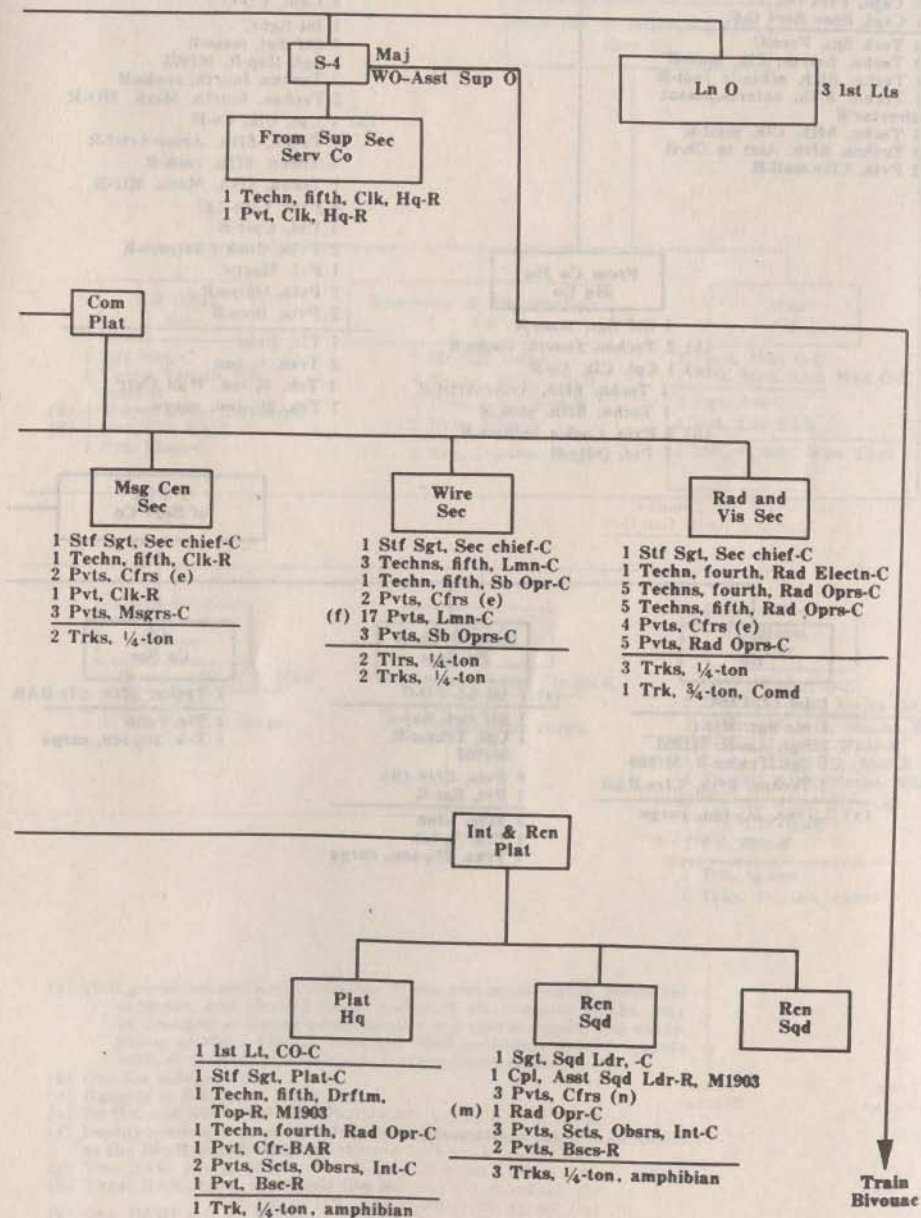


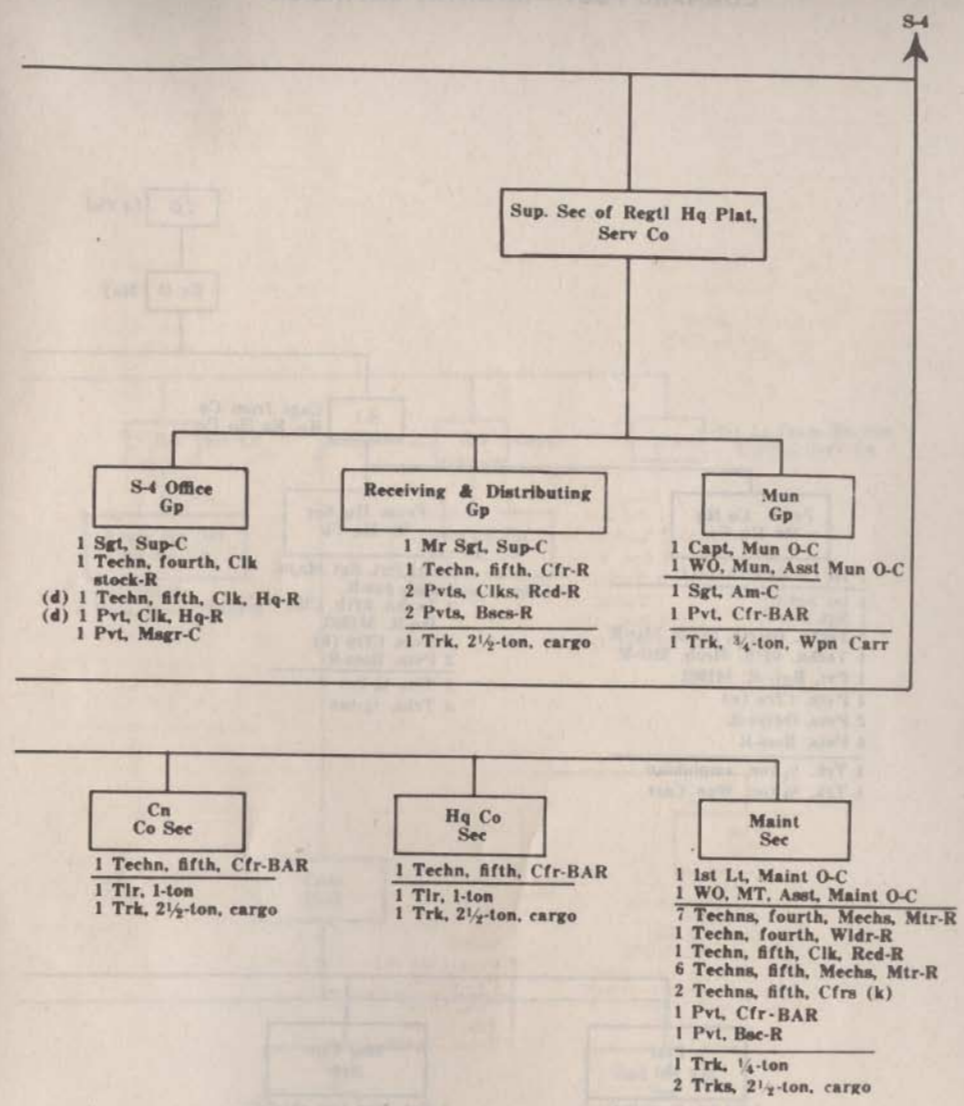
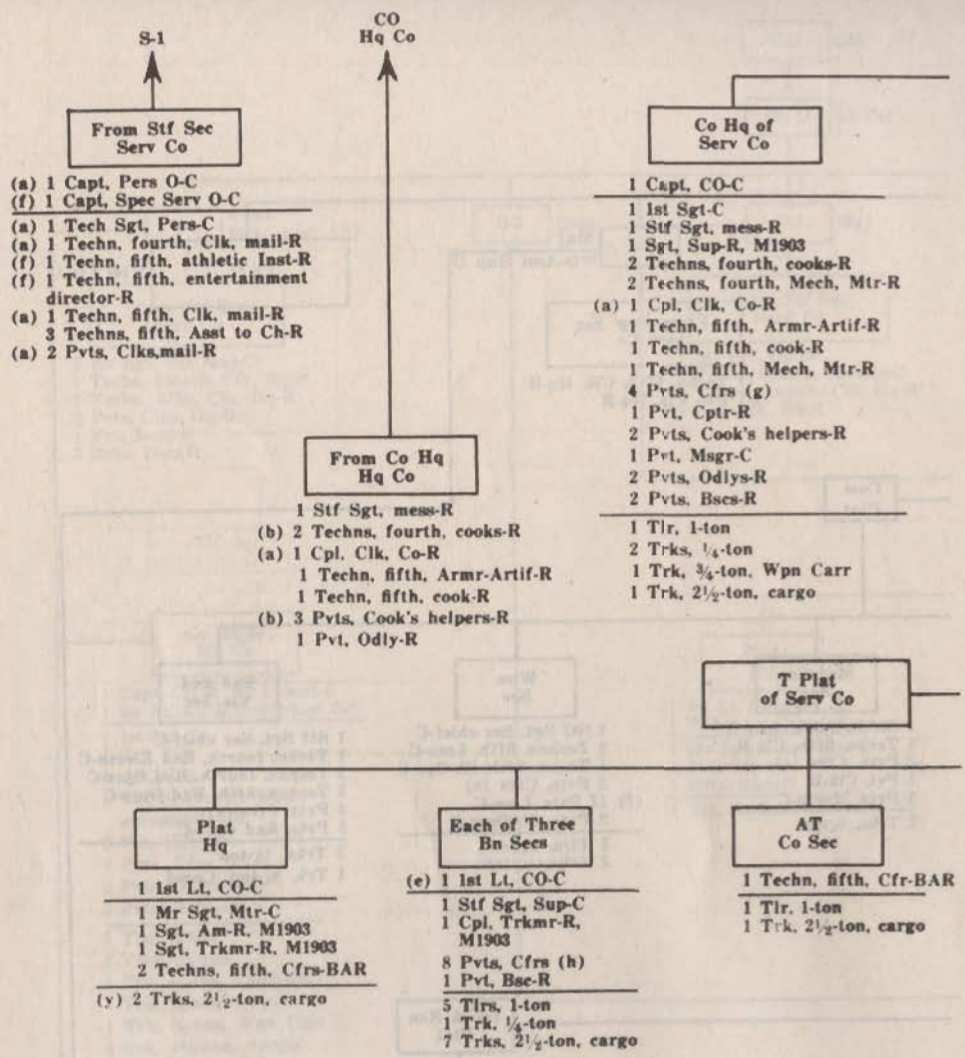
#### COMPANY

3 Bn Secs (each)	AT Co Sec	Cn Co Sec	Hq Co Sec	Maint Sec
				1 Trk. ¼-ton
2 Trks. 2½-ton				
5 Tlrs. 1-ton 5 Trks. 2½-ton (Ki & Bag)	1 Tlr. 1-ton 1 Trk. 2½-ton (Ki & Bag)	1 Tlr. 1-ton 1 Trk. 2½-ton (Ki & Bag)	1 Tlr. 1-ton 1 Trk. 2½-ton (Ki & Bag)	2 Trks. 2½-ton

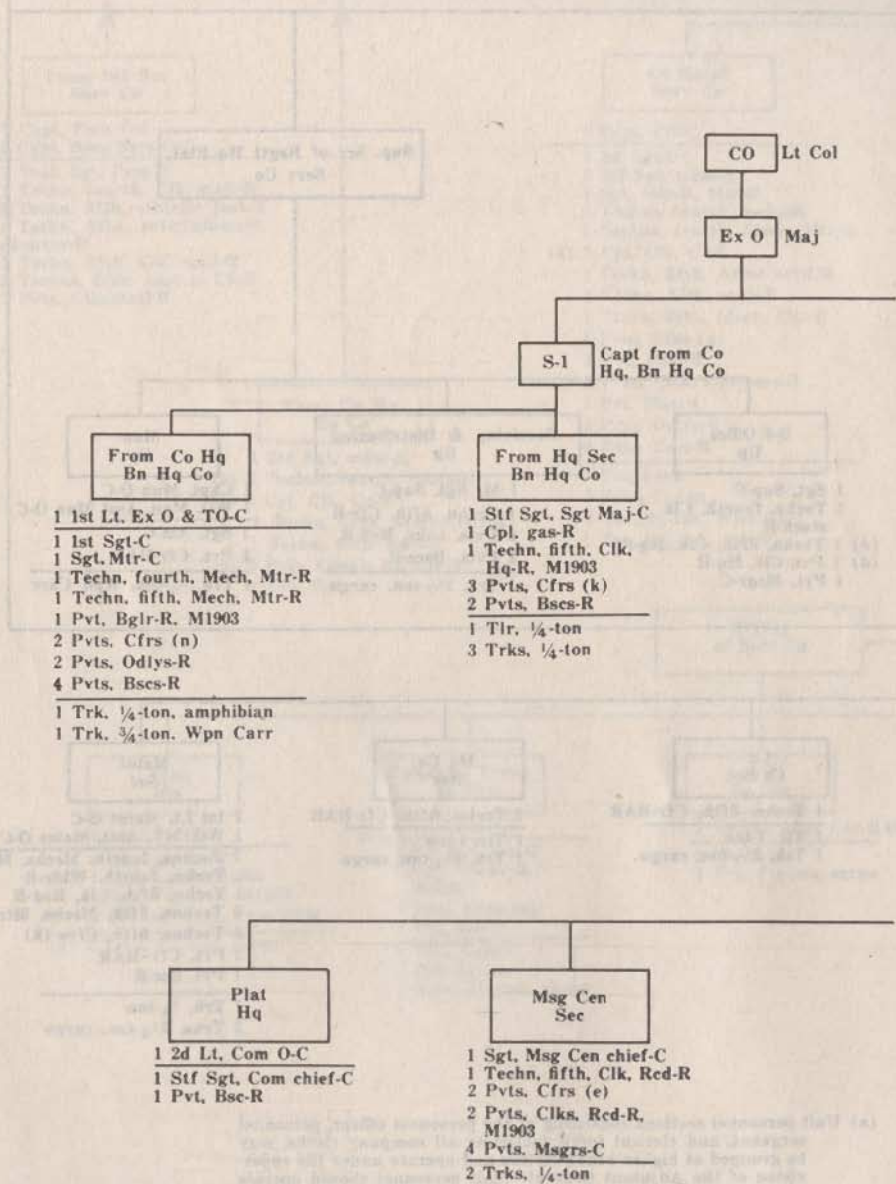


- (d) Three BAR for antiaircraft defense; three R, M1903 for antitank defense; and one R.
- (e) Cfrs of Com Plat armed: three BAR; three R, M1903; three R.
- (f) Includes six for the AT Co.
- (m) Techn, fifth, in one Sqd; Pvt in one Sqd.
- (n) One BAR; two R, M1903.





- (a) Unit personnel sections consisting of the personnel officer, personnel sergeant, and clerical force, including all company clerks, may be grouped at higher headquarters and operate under the supervision of the Adjutant General. Mail personnel should operate with, or in close proximity to, the personnel section.
- (b) One for officers' mess.
- (d) Operate in S-4 Sec at Regtl CP.
- (e) Bn S-4, operates from Bn CP.
- (f) During combat, may operate from such place and perform such duties as the Regtl Comdr may direct.
- (g) Two BAR; two R, M1903.
- (h) Three BAR; three R, M1903; two R.
- (k) One BAR; one R, M1903.
- (y) Includes 1 general supply truck and 1 engineer supply truck.



(e) Cfrs with Com Plat armed: two BAR; three R.  
 (k) Two BAR; one R, M1903.  
 (n) One BAR; one R, M1903

