

119th
KIA

Dec
A
~~B~~ C
D
E
F
G
H
I
J
K
L
M
N

17	-	-	-	-	-	-	-	-	-	-	-	-	-	-	-	-	-	-	-
18	-	-	-	-	-	-	-	1	-	-	-	-	-	-	-	-	-	-	-
19	-	-	-	-	-	-	-	-	-	3	4	-	-	-	-	-	-	-	1
20	-	-	-	-	1	-	-	-	-	-	1	-	-	-	-	-	-	-	-
21	-	-	-	-	3	3	-	-	1	2	-	-	-	1	-	-	-	-	-
22	-	-	-	-	6	6	-	-	-	-	-	-	-	2	-	1	-	-	-
23	-	-	-	-	1	6	-	-	-	-	-	-	-	-	-	-	-	-	-
24	-	-	-	-	-	-	-	-	-	-	1	-	-	-	-	-	-	-	-
25	-	-	-	-	-	-	-	-	-	-	-	-	-	-	-	-	-	-	-

KIA

Effective strength on 17 Dec 44

EM 140 130 164 118 136 176 155 150 148 122 129 148 141 147 139 139 132 160 148 128

NO 1 4

144 145 137 165 152

Jy
 can
 A.T.
 Sew
 Jy 1
 B
 B
 C
 D
 Jy 2
 E
 F
 G
 H
 Jy 3
 I
 K
 L
 M
 P
 Q

17	-	-	-	-	1	-	1	1	2	-	-	-	-	1	1	1	1	1
18	-	-	-	-	-	-	1	1	-	6	-	1	-	-	-	-	-	-
19	-	-	-	1	2	2	2	-	-	1	3	-	1	1	2	3	6	5
20	-	-	-	1	1	-	-	-	-	2	4	1	-	-	-	2	1	-
21	-	-	-	1	1	-	1	1	-	1	1	1	-	-	-	3	6	3
22	-	-	1	-	4	-	-	-	-	5	1	4	-	1	3	-	5	2
23	-	-	-	1	-	-	-	-	-	3	2	2	-	-	-	-	2	2
24	-	-	-	-	-	-	7	3	-	5	1	1	-	1	7	-	1	3
25	1	-	-	-	-	-	-	-	-	3	1	2	2	-	3	-	-	-

Non Battle Casualties
 (Self inflicted wounds, trench foot, disease, etc.)

<u>Date</u>	oxy Co	Can Co	H-T Co	Sen Co	Ny Co 1st Bn	Co A	Co B	Co C	Co D	Ny Co 2 Bn	Co E	Co F	Co G	Co H	Ny Co 3 Bn	Co I	Co K	Co L	Co M	Med Det	
17	-	-	-	-	-	-	-	-	-	-	-	-	-	-	-	-	-	-	-	-	-
18	-	-	-	-	-	1	-	-	-	-	-	-	-	-	7	-	-	-	-	-	-
19	-	-	-	-	-	1	-	-	-	-	-	-	-	1	3	6	7	1	10	-	-
20	-	-	-	-	-	-	12	2	1	-	-	1	-	-	-	-	2	1	-	-	-
21	-	1	-	-	9	21	17	5	-	2	-	3	-	-	1	8	3	2	-	-	-
22	-	-	-	-	1	2	4	1	1	2	-	1	-	-	3	-	4	-	1	-	-
23	-	-	-	-	10	1	5	3	-	-	-	-	-	-	1	-	-	-	-	-	-
24	-	-	-	-	2	-	4	-	-	4	1	6	7	1	4	-	-	-	-	-	-
25	-	-	-	-	-	1	-	-	4	1	3	7	3	-	-	3	-	-	-	-	-

Wounded in action (Battle Casualties)

Dec	Jlg	Can	F-T	Sen	Nylo	A	B	C	D	Jlg 2	E	F	G	H	Jlg 3	I	K	L	M	Med
17	-	-	-	-	-	-	-	-	-	-	-	-	-	-	-	-	-	-	-	-
18	-	-	-	-	-	-	-	-	-	-	-	-	-	-	-	-	-	-	-	-
19	-	-	-	-	-	-	-	-	-	-	-	-	-	-	-	-	-	-	-	-
20	-	-	-	-	-	-	-	-	-	-	-	-	-	-	-	-	1	2	-	-
21	-	-	-	-	-	-	-	-	-	-	-	-	-	-	-	1	-	6	-	-
22	-	-	-	-	-	-	-	-	-	-	-	-	-	-	-	-	6	1	-	-
23	-	-	-	-	-	-	-	-	-	5	-	-	-	-	-	-	-	-	-	3
24	-	-	-	-	-	20	-	-	2	1	-	-	-	-	19	57	8	28	24	-
25	-	-	-	-	-	-	4	-	-	-	-	-	-	-	-	-	-	-	-	-

Returned to study from MIA
 (originally rptd MIA between 17 to 25 incl)

120th Inf

Eff. Strength KIA WIA MIA TOTAL

Company A

20 Dec

21 Dec

22 Dec

23 Dec

24 Dec

25 Dec

1

1

1

1

||||

"

Company B

21 Dec

22 Dec

23 Dec

24 Dec

25 Dec

2

||

1

||

Eff. Strength

KIA

WIA

MIA

Total

Company C

21

22

23

24

25

11

Company D

21

22

23

24

25

3

1

Eff. Strength KIA WIA MIA Total

Company E

21	1	3		
22	1	1		
23	///	/// 1		9
24		///		5
25				

Company F

21		1		
22				
23				
24		///	///	17
25	11	/// 111	/// 1	16

Eff. StrengthKIAWIAMIATotalCompany G

21 -

22

23

24

25

1

~~||||~~ ~~||||~~
~~||||~~ ~~||||~~
||||~~||||~~~~||||~~ ~~||||~~

24

17

Company H

21

22

23

24

25

|||

1

|||

1

Eff. StrengthKIAWIAMIATotalCompany I

21

1

22

1

23

1

24

1

1

25-

Company K

21

5

5

22

11

8

"

12

23

"

2

24

1

~~11~~ 11

"

10

25-

~~11~~ ~~11~~ 1

11

Eff. Strength KIA WIA MIA Total

Company L

21

22

23

24

25

1

IIII

10

Company M

21

5

3

22

3

23

1

1

1

24

###

1

25

11

IIII

16

2

6

Eff. Strength KIA WIA MTA TOTAL

AT Co

21

22

23

24

25

~~||||~~ ~~||||~~ |||

|||

|||| 1

13

9

December

120⁷²

	21	22	23	24	25
A	137	134	129	123	120
B	142	141	140	140	139
C	155	153	153	151	152
D	149	149	149	148	150
E	139	139	137	132	130
F	144	143	143	127	119
G	158	156	156	124	125
H	167	166	165	161	156
I	139	139	139	138	135
K	140	131	130	116	117
L	139	136	133	134	135
M	147	142	141	135	136
AT	161	159	159	147	142
CW	126	126	126	126	126
MD	140	140	140	140	140

Effective Strength

DECLASSIFIED

30 D. Division

20 Jan. 45

Attached casualty figures of the 30 Div's
three regts were compiled from the ^{company} morning
reports and official casualty reports, on file
at Div Hq.

7-2 - 25
②

J. Ferris, Capt
4th I. & H.

117TH INF

CANNON CO.

Dec 1	EFF Strength	WIA	KIA	MIA	TOTAL
17	118				
18	118				
19	117				
20	117				
21	117				
22	116				
23	116				
24	116				
25	117	1			1

117TH INF.

ANTI-TANK CO.

DATE	EFF	STRENGTH	WIA	MIA	KIA	TOTAL
Dec. 17		165				
18		165				
19		165				
20		163				
21		163				
22		163				
23		163				
24		162	1		1	
25		162	*		*	

117TH INF.

HQ. COMPANY

DATE	EFF STRENGTH	WIA	MIA	KIA	TOTAL
17	122				
18	122				
19	121				
20	121				
21	121				
22	121				
23	121				
24	121				
25	121				

115TH INF. SERVICE COMPANY

DATE	Eff STRENGTH	WIA	MIA	KIA	TOTAL
17	120				
18	120				
19	120				
20	120				
21	120				
22	120				
23	120				
24	120				
25	120				

117TH INF.

HQ Co 1st BN.

DATE	Eff STRENGTH	WIA	MIA	KIA	TOTAL
17	139				
18	139				
19	139				
20	139				
21	139				
22	138	1			1
23	138				
24	138				
25	138				

117TH INF.

Co. A

MIA's
+ KIA's
probably
missed

DATE	EFF. STRENGTH	WIA	MIA	KIA	TOTAL
17	209				
18	210				
19	204	5	5	12	22
20	183	4			4
21	163	4	1		5
22	163	3	1		4
23	159	4			4
24	157				
25	158			1	1

117TH INF.

Co. B

DATE	EFF. STRENGTH	NIA	MIA	KIA	TOTAL
17	202				
18	201				
19	195	3	3		6
20	195				
21	174	2		1	3
22	173	1			1
23	176				
24	182	1			1
25	182				

117TH INF.

Co. C

DATE	EFF. STRENGTH	WIA	MIA	KIA	TOTAL
17	204				
18	204				
19	204	1	2		3
20	201	1		1	2
21	196	1			
22	191	1			1
23	190	7			7
24	182	1			1
25	182				

117TH INF.

Co. D

DATE	EFF. STRENGTH	NIA	MIA	KIA	TOTAL
17	181				
18	181				
19	179	2			2
20	175	2			2
21	173				
22	174	1			1
23	174				
24	174				
25	174				

115TH INF.HQ. CO. 2ND BN.

DATE	EFF. STRENGTH	WIA	MIA	KIA	TOTAL
17	133				
18	133				
19	133				
20	133				
21	131				
22	130				
23	130				
24	130				
25	129				

117TH INF. Co. E

DATE	EFF. STRENGTH	WIA	MIA	KIA	TOTAL
17	195				
18	195				
19	191				
20	191				
21	188				
22	187				
23	187				
24	187				
25	187				

115TH INF. Co. F

DATE	EFF. STRENGTH	WIA	MIA	KIA	TOTAL
17	181				
18	182				
19	183		1		1
20	183				
21	182				
22	182				
23	182				
24	182				
25	180				

117TH INF.

Co. G

DATE	EFF. STRENGTH	WIA	MIA	KIA	TOTAL
17	199				
18	199				
19	199				
20	198		2		2
21	196			3	3
22	195				
23	192	1	2		3
24	189		1		1
25	187	1			1

117TH INF.

Co. G

DATE	EFF. STRENGTH	WIA	MIA	KIA	TOTAL
17	199				
18	199				
19	199				
20	198		2		2
21	196			3	3
22	195				
23	192	1	2		3
24	189		1		1
25	187	1			1

117TH INF.

Co. H.

DATE	EFF. STRENGTH	WIA	MIA	KIA	TOTAL
17	174				
18	174				
19	174				
20	174				
21	174				
22	174				
23	174				
24	174				
25	174				

117TH INF.HQ Co. 3RD BN

DATE	EFF. STRENGTH	WIA	MIA	KIA	TOTAL
17	124				
18	125				
19	125				
20	125				
21	125				
22	125				
23	125				
24	125				
25	125				

117TH INF.

Co. I

DATE	EFF. STRENGTH	WIA	MIA	KIA	TOTAL
17	206				
18	207				
19	207				
20	205				
21	202	2	2		4
22	202				
23	199	1	1		2
24	193	5			5
25	192	1			1

117TH INF.

Co. K

DATE	EFF. STRENGTH	WIA	MIA	KIA	TOTAL
17	219				
18	220				
19	220				
20	214				
21	214	2	1		3
22	214	1			1
23	209	9		1	10
24	199	2		4	6
25	172	4	2	1	7

117TH INF

Co. L

DATE	EFF. STRENGTH	WIA	MIA	KIA	TOTAL
17	211				
18	211				
19	211				
20	210				
21	210		1		1
22	210	2			2
23	209	8	3	1	12
24	198	14		1	15
25	174	1	1	1	3

117TH INF.

Co. M

DATE	EFF. STRENGTH	WIA	MIA	KIA	TOTAL
17	169				
18	169				
19	169				
20	169				
21	169				
22	168				
23	168				
24	168	1			1
25	164				

117TH INF.

MED. DET.

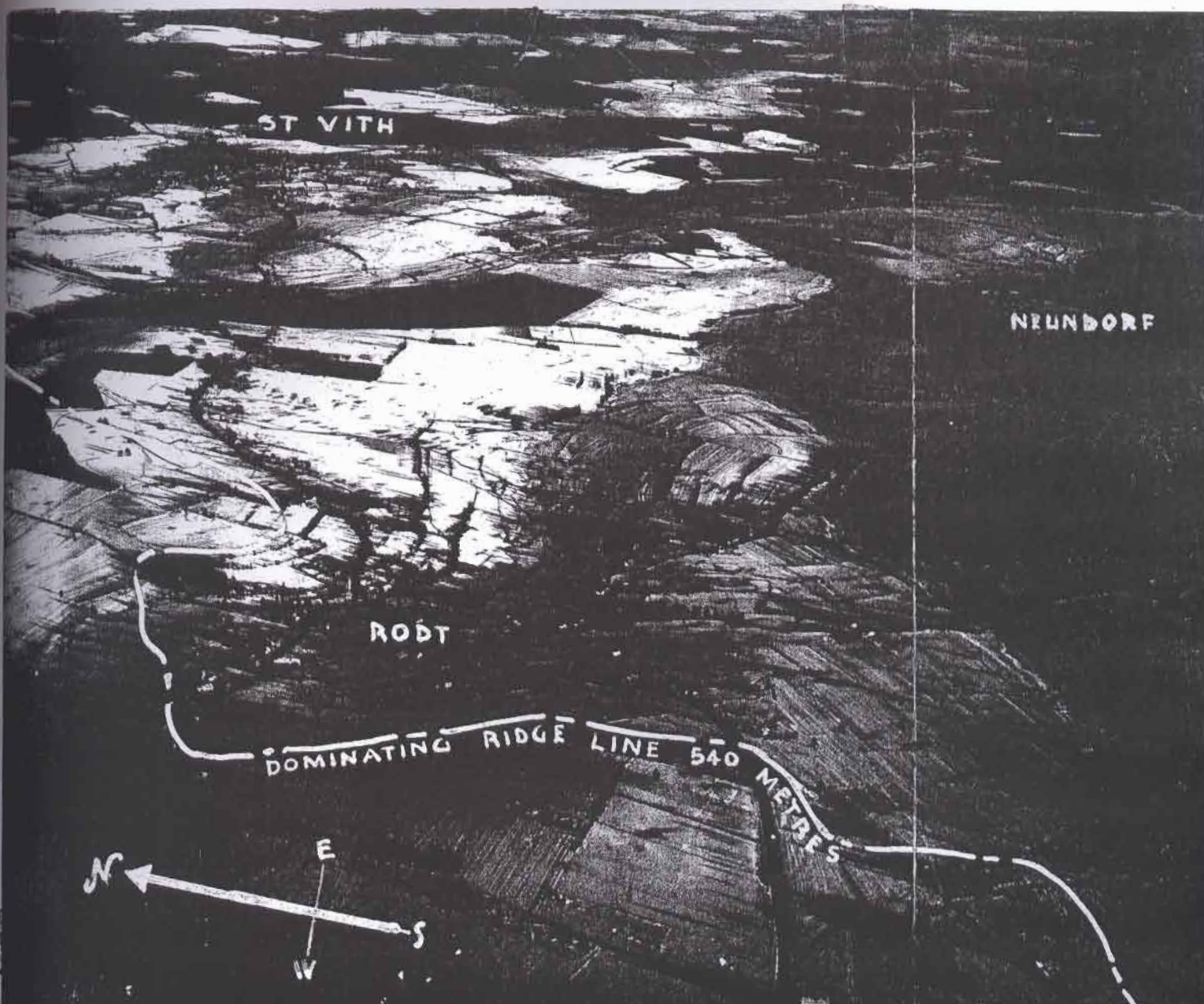
DATE	EFF.	STRENGTH	WIA	MIA	KIA	TOTAL
17		138				
18		137				
19		134	2	1		3
20		133				
21		133				
22		133				
23		133				
24		133				
25		133				

ST VITH

NEUNDORF

RODT

DOMINATING RIDGE LINE 540 METRES



27 ~~E.~~ - to clean ~~Merry~~ - E to
Take R F to take L of town.
1st pl. ^{BEL.} to go straight East on R
side. 3^d to clear orchards on
R side. 2^d in support

E to fire into doors & windows
on F's side, & vice versa

^{Describe} ^{back of} ~~Cott.~~: at least 200 empty in Merry.
Roughest fight in orchards,
- where overhead bunkers protected em.

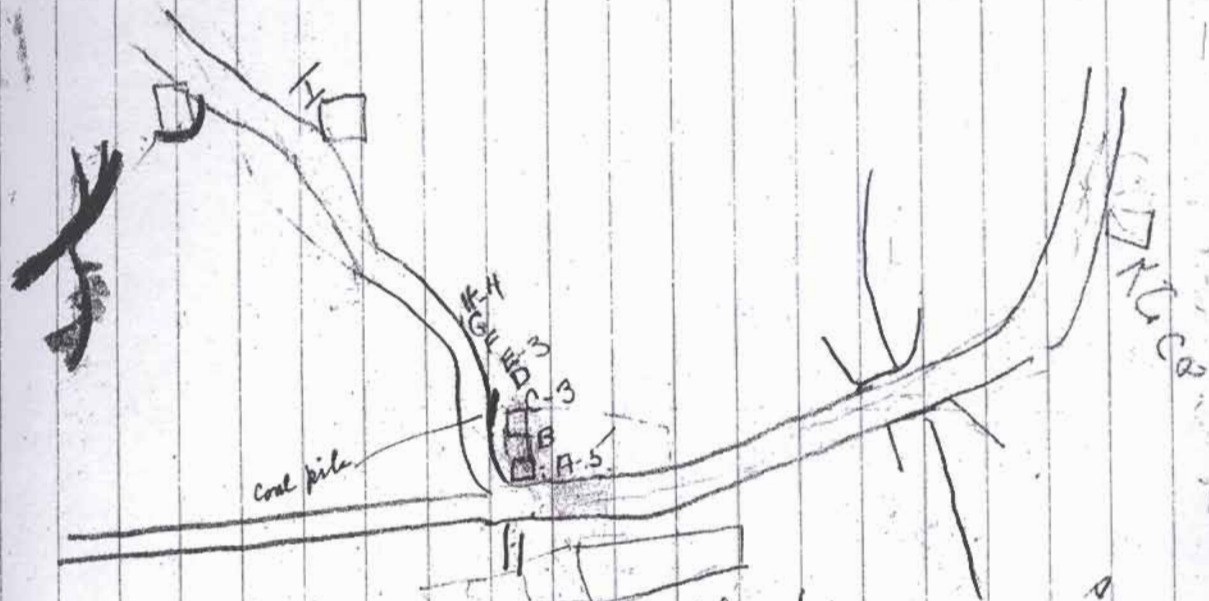
- fences around each orchard -

T.D.'s wouldn't help. Supposed
to have 2 T.D.'s & 2 m-4's. But
as they jumped off, the last
friendly mines - mix-up re

removal of mines due engs
having just in mines unknown
to E, who had responsibility of removing mines.

Hall getting direct fire, s.e., &
mortar fr R front - 2 T.D.'s ^{were there}
so far ^{out} on R Hall didn't know ~~them~~

Fences forced Hall's men to
work out of houses into orchards
So close to Jerry's, ~~but~~ often as



- | | |
|--------------------|------------------|
| A - First sq. | G - 3" T. D. GUN |
| B - H. M. G. Sect. | H - 1st sq. |
| C - Second sq. | I - 3" T. D. GUN |
| D - A. T. Room | |
| E - Second sq. | |
| F - H. M. G. Sect. | |

Notes.

GL-225
②

also

See accounts of TF "5"

Jordan (capt John Jordan)

and TF "2" (Low Lady)

CCB, 3rd Armored

Div. for additional

details on the La Glize -

Stamont. fight - 20-25

December - 44.

Paul H. Hurdell
1st Lt c.m.p.

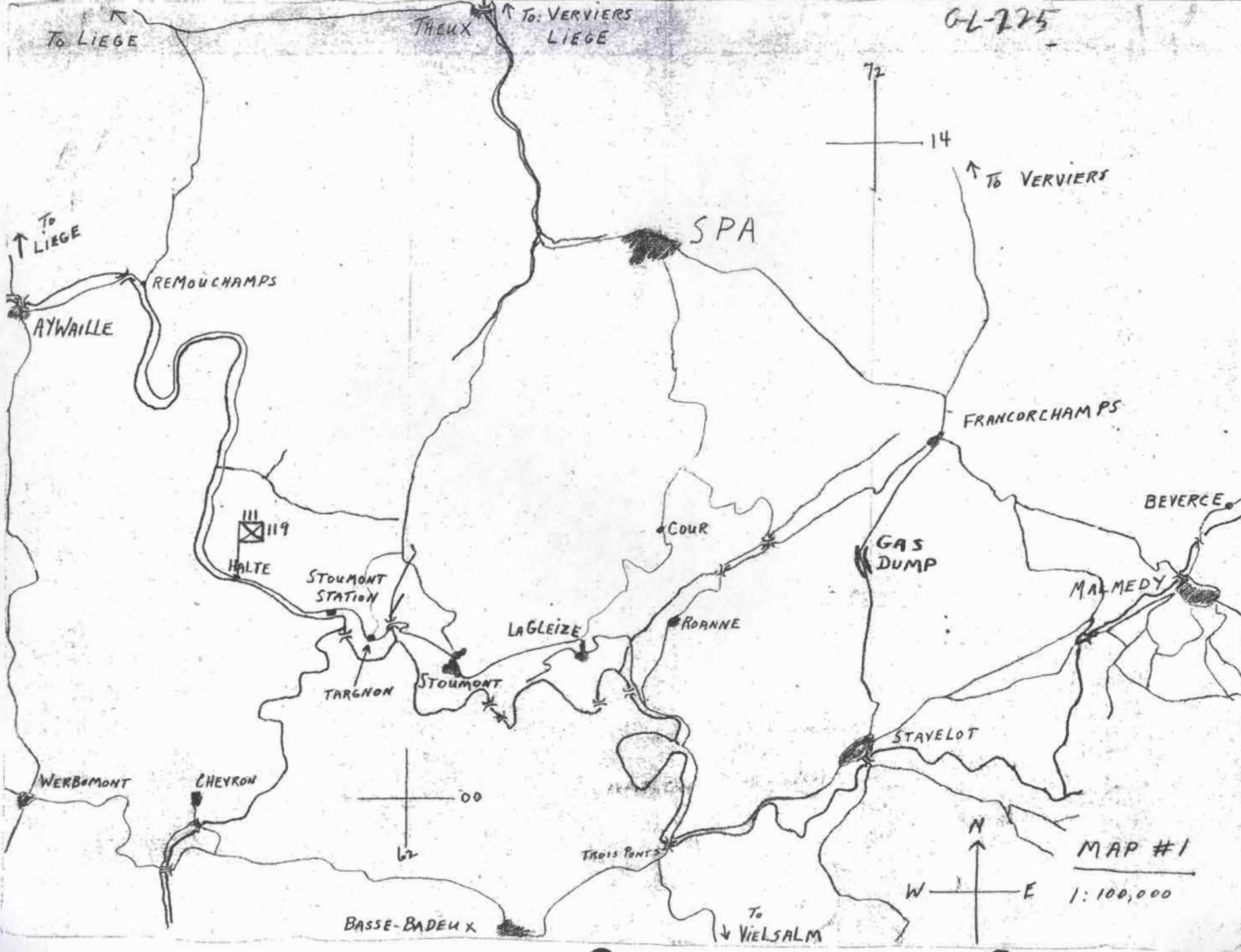
OL-225^{20 Jan. 45}

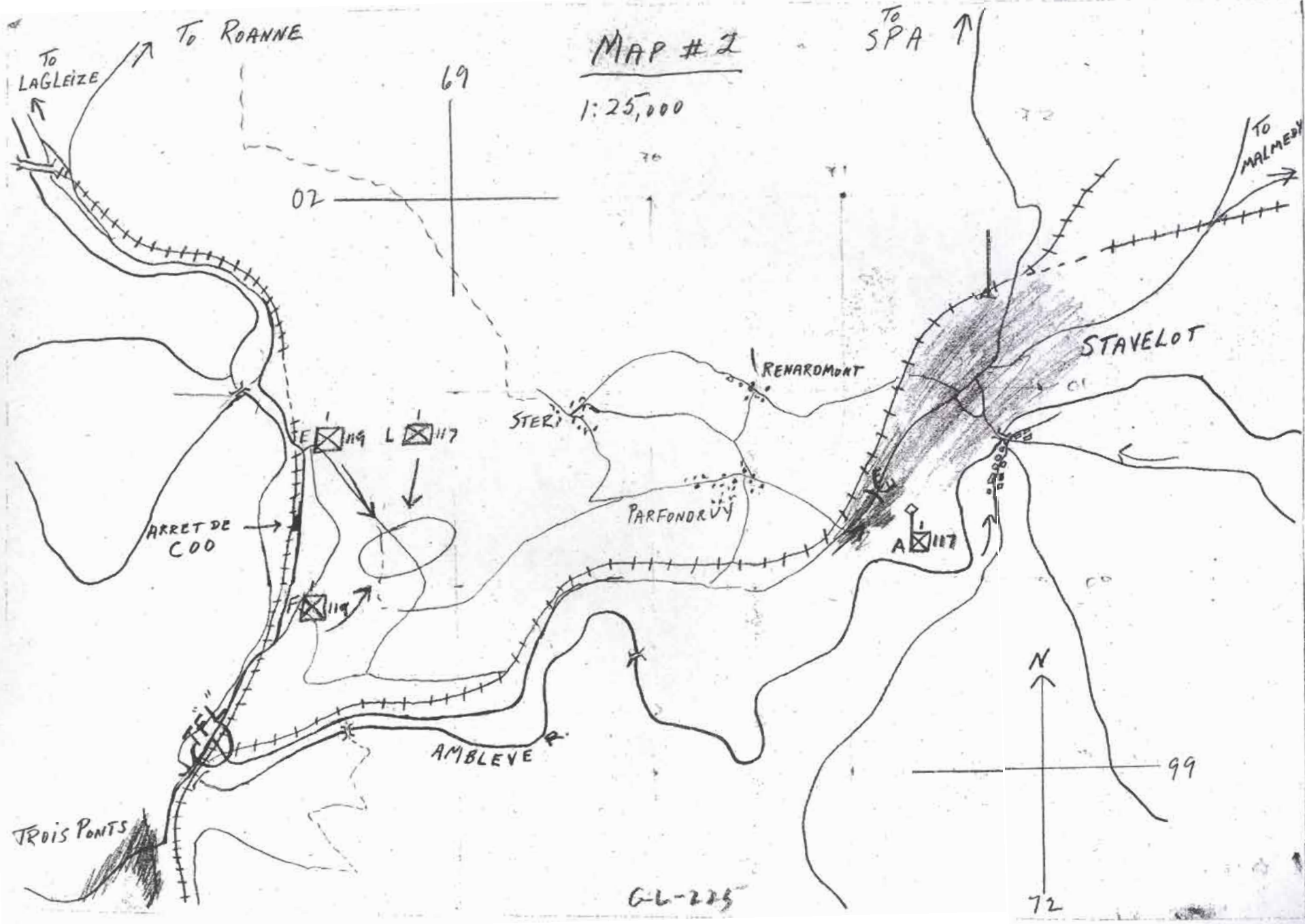
Memo re Overlays submitted with
my account of 30th Inf Div in
the Battle of the Bulge, 17-25 Dec.

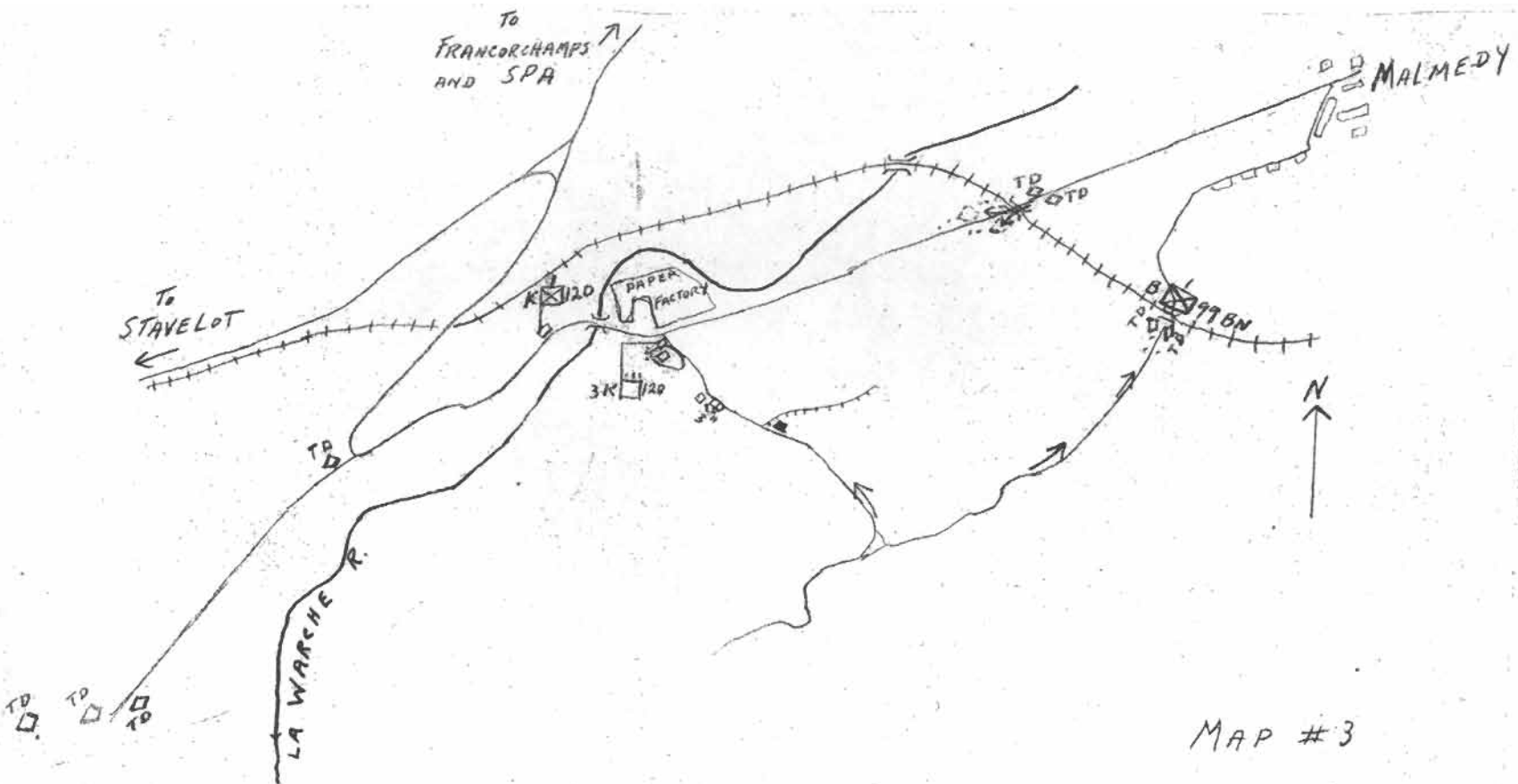
These overlays lack two things
that the final graphic presen-
tation of the story must bring
out, viz., the variations in ele-
vation and the wooded areas. I
believe, from my inspection of the
terrain from Malmedy to Re-
monchamp, that the 1 to 50,000
map (Malmedy sheet) shows this
information most accurately.

J. Ferriss,
Capt., AFHS
4th I. & H.

G-6-275



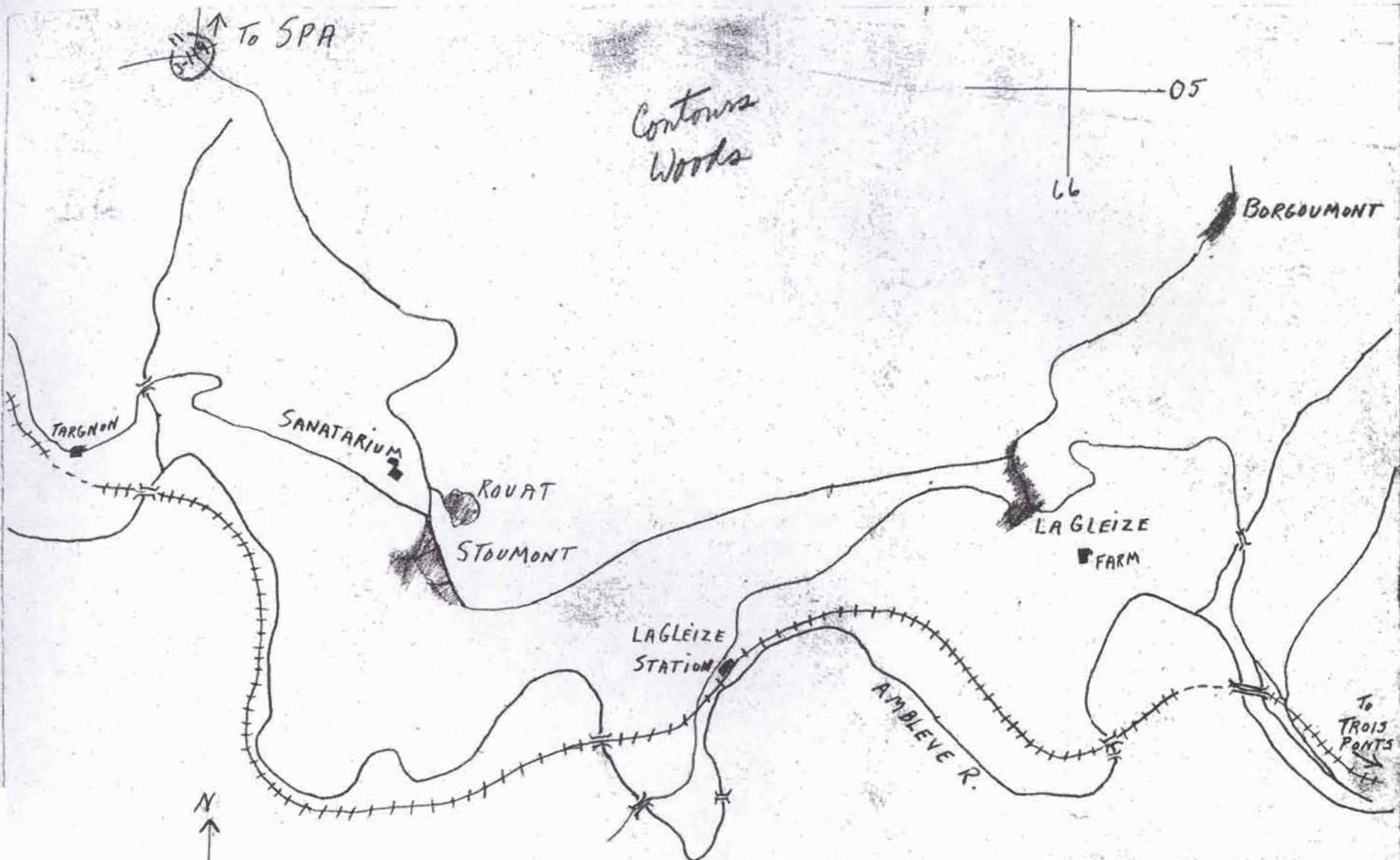




MAP #3

AERIAL PHOTO
US 30/5198 24 DEC
#1061 [attached]

GL-724



MAP #5
1:25,000

G-L-225